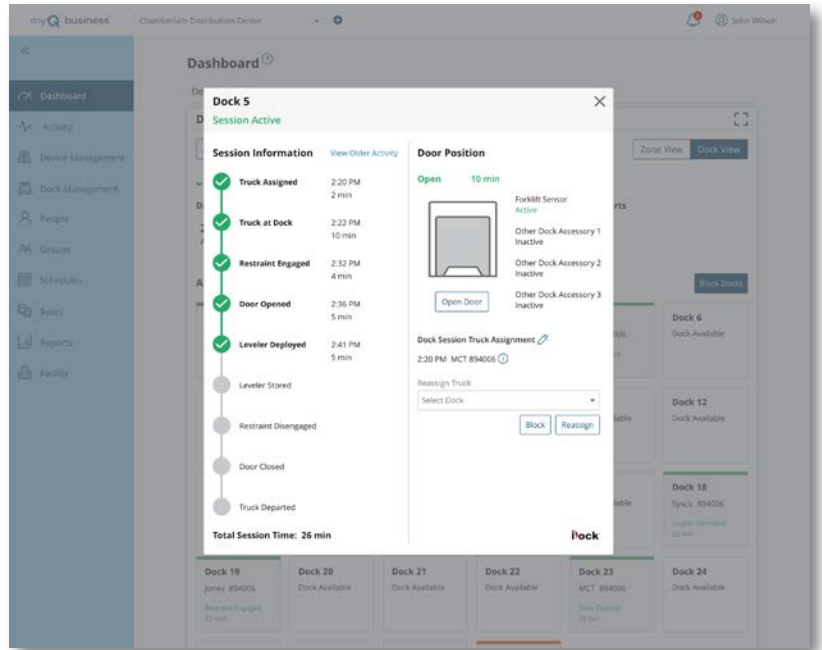
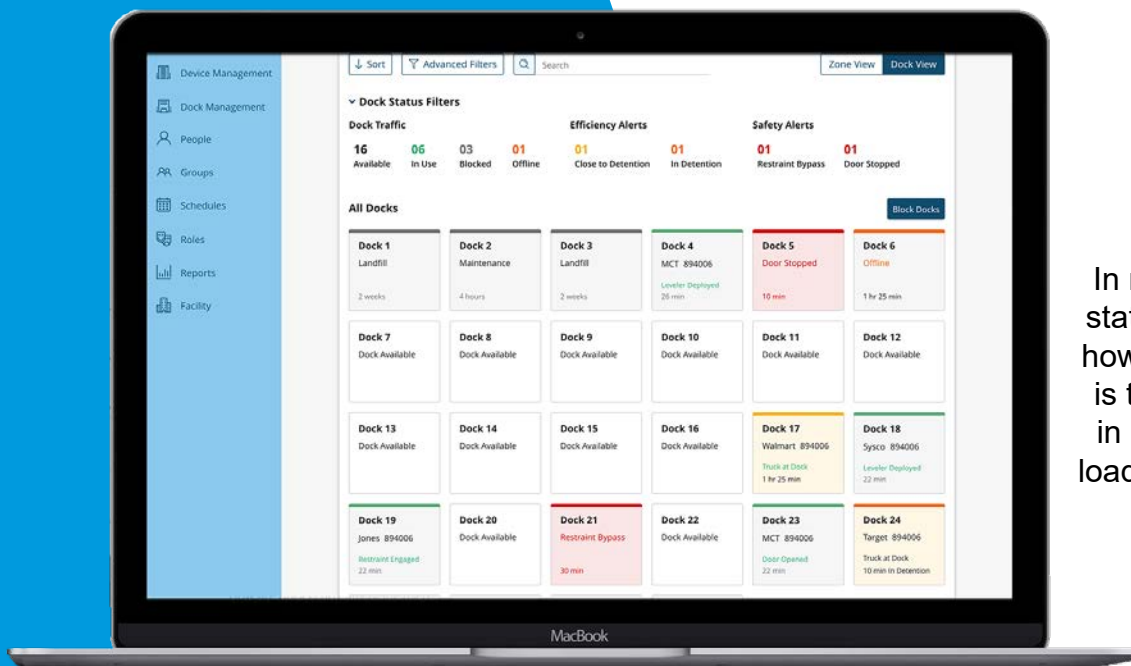


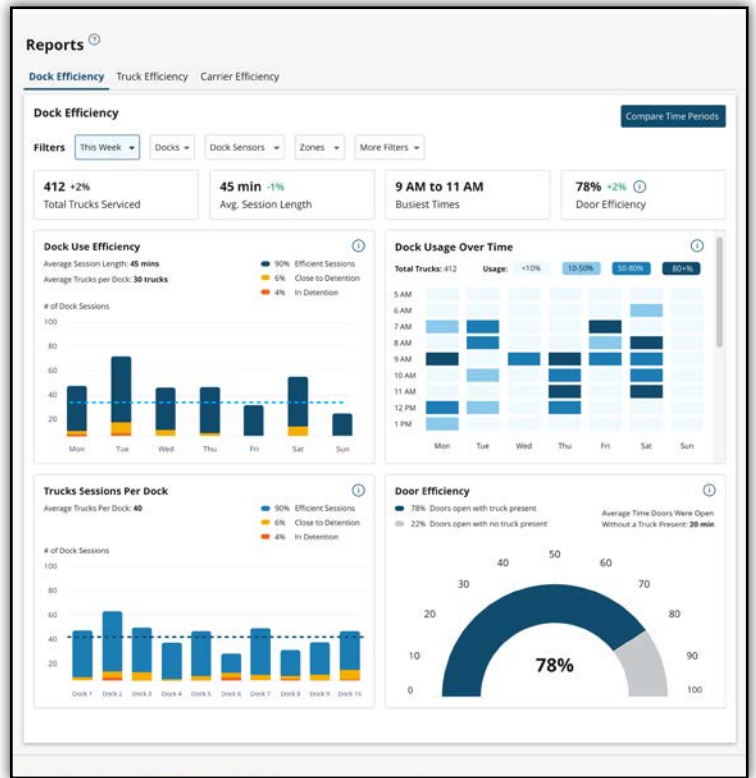
Receive text/email notifications of load times taking too long.



Monitor current time stamps of activity and react to a step in the process that is taking too long (i.e. restraint engaged, but leveler hasn't been deployed yet).

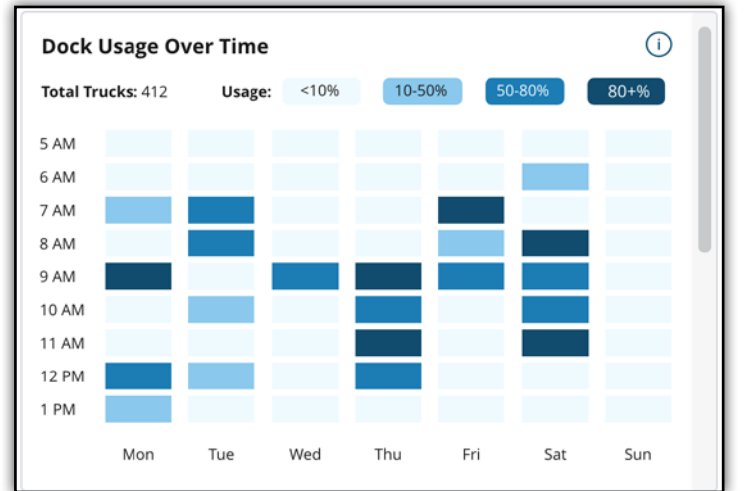
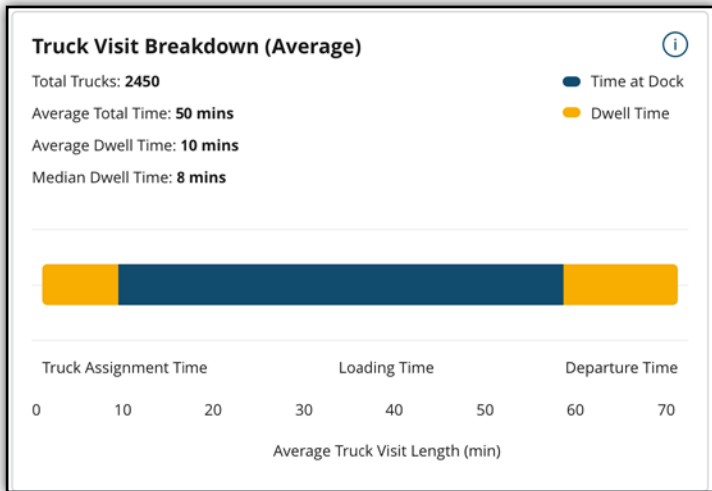


In real-time, review the status of each dock and how long loading activity is taking. Be proactive in helping to finish any loading sessions that are behind.



Lookup any past truck-at-dock session to review how long loading took and if there efficient forklift activity. What activity caused the session to go into detention.

Find any days that have longer average truck turn times. Then review the truck sessions per dock on those days and make corrections to improve these load times.



Evaluate wasted dwell time before loading and determine which docks are not starting loading fast enough once the truck arrives and make corrections.

Review average dock usage each hour and determine if additional personnel, shifts, and docks are needed to get more trucks loaded in a timely manner.



W194 N11481 McCormick Drive • Germantown, WI 53022 • Phone: 1.800.643.5424 • Email: sales@loadingdocksystems.com

[www.loadingdocksystems.com/myQ](http://www.loadingdocksystems.com/myQ)