



- ▶ Head Curtain Accommodates High Volume Traffic with Differing Trailer Heights
- ▶ Top of Unit is Sloped Forward to Promote Water Drainage & Supported by Wood 2" x 4" at Wall
- ▶ Tapered Top is Supported at Front by Tubular Metal Support Inside Curtain
- ▶ Full Length Yellow Guide Stripes to Assist Drivers Positioning of Trailers
- ▶ All Pads Are Vented for Air & Moisture Release
- ▶ Quick Recovery, Highly Resilient, Endurance Tested Foam Compresses Easily & Yet Maintains Original Shape
- ▶ Foam is Chemically Welded to Double Kiln Dried Pressure Treated Lumber with Non-flammable Adhesive
- ▶ Wide Selection of Highly Durable Fabrics & Wear Surfaces to Maximize Durability
- ▶ Intermediate Fiberglass Stays in Curtain Add Stiffness to Aid in Prevention of Sagging

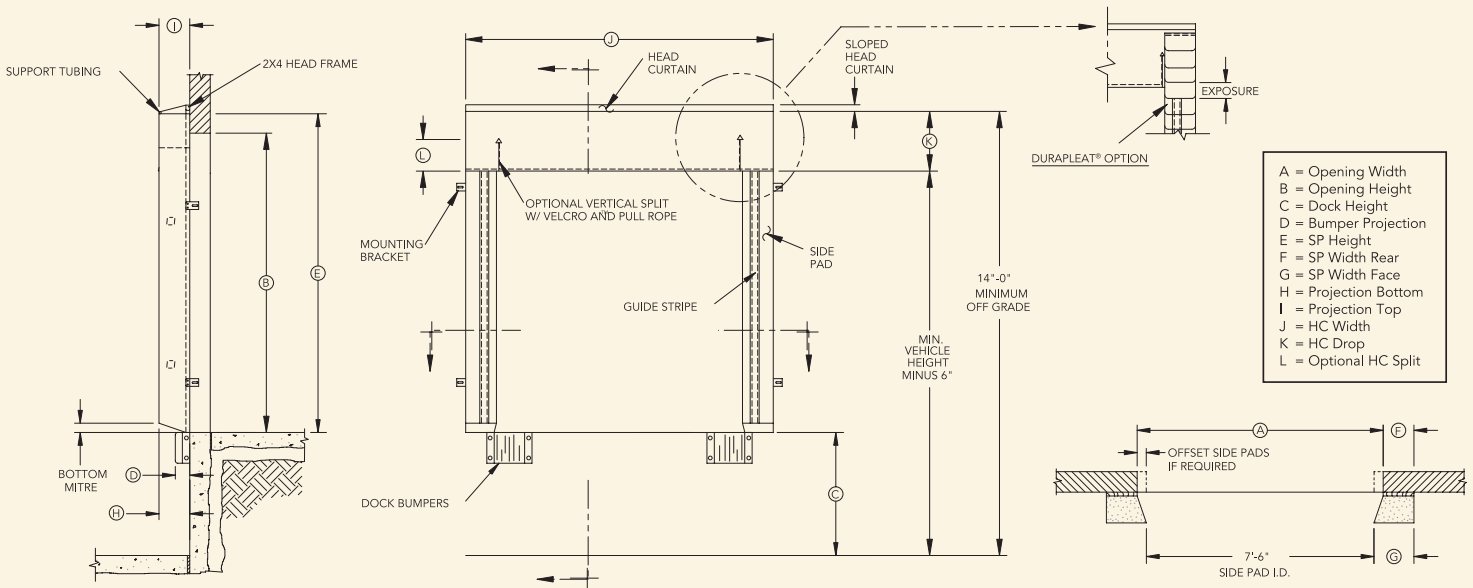
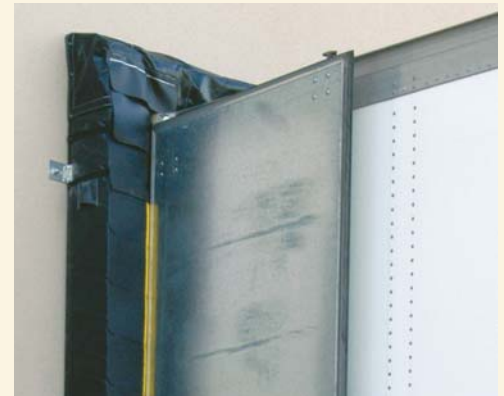
**Specifications**

Specifications: Dock Seals shall be model TS \_\_\_\_\_ as provided by W.B. McGuire™ Company to fit a door opening \_\_\_\_\_ wide x \_\_\_\_\_ high. Side pads shall enclose a polyurethane foam pad, which is to be chemically welded to a 2" thick, pressure treated wood frame, kiln dried before and after treating. (Steel frame is optional.) The cover shall wrap behind the wood weather-tight construction. Adequate air exhausts and drain holes are to be provided in covers, and both shall be designed to prohibit moisture infiltration. Side pads shall include full length, highly visible guide stripes. Mounting hardware shall be galvanized steel.

Standard unit shall consist of two side pads that mount vertically along both sides of the door opening. The head curtain shall be secured at the building face by the means of a pressure treated, kiln dried before and after treating, 2"x4" wood head frame, which shall be mounted over the top of the side pads with the head curtain tapering away to provide for adequate drainage. Unit shall include intermediate "Scotchply®" stays, a front tubular metal support and tension straps to keep head curtain taut. The support tubing shall be held in place by a fabric sleeve sewn into the head curtain. Various pad widths, projections, tapers and bevel shapes are available.

**Options**

- Base Fabric:** (in a variety of colors)
- Truk Flex™ (heavy usage)
  - Rough Flex™ (medium usage)
  - 22 oz. Vinyl (medium usage)
  - 40 oz. Vinyl (medium/heavy usage)
  - 16 oz. Hypalon® (light – base cover only)
- Durapleat®:**
- 4" exposure
  - 8" exposure
  - 16" exposure
  - Beveled side and/or head pads
  - Tapered side pads
  - Additional projections beyond 10" standard
  - Split curtains with rope and pulley



**W.B. McGuire™ Company**  
 205 Broadview Street  
 P.O. Box 151  
 Upper Sandusky, OH 43351  
 Phone 1.800.262.1188  
 Fax 419.294.4980  
[www.wbmcguire.com](http://www.wbmcguire.com)