



- ▶ **Tightest Possible Seal Between Interior & Exterior Environments**
- ▶ **Accommodates High Volume Traffic with Consistent Widths & Heights**
- ▶ **Pressure Treated Lumber, Kiln Dried Before & After Treatment**
- ▶ **Full Length Yellow Guide Stripes to Assist Drivers Positioning of Trailers**
- ▶ **All Pads Are Vented for Air & Moisture Release**
- ▶ **Tapered Pad Bottoms Avoid Wear & Pinching**
- ▶ **Quick Recovery, Highly Resilient, Endurance Tested Foam Compresses Easily & Yet Maintains Original Shape**
- ▶ **Foam is Chemically Welded to Double Kiln Dried Pressure Treated Lumber with Non-flammable Adhesive**
- ▶ **Wide Selection of Highly Durable Fabrics & Wear Surfaces to Maximize Durability**

**Specifications**

Specifications: Dock Seals shall be model TS \_\_\_\_\_ as provided by W.B. McGuire™ Company to fit a door opening \_\_\_\_\_ wide x \_\_\_\_\_ high. Head and side pads shall enclose a polyurethane foam pad, which is to be chemically welded to a 2" thick, pressure treated wood frame, kiln dried before and after treating. (Steel frame is optional.) The cover shall wrap behind the wood weather-tight construction. Adequate air exhausts and drain holes are to be provided in covers, and both shall be designed to prohibit moisture infiltration. Side pads shall include full length, highly visible guide stripes. All hardware shall be galvanized steel.

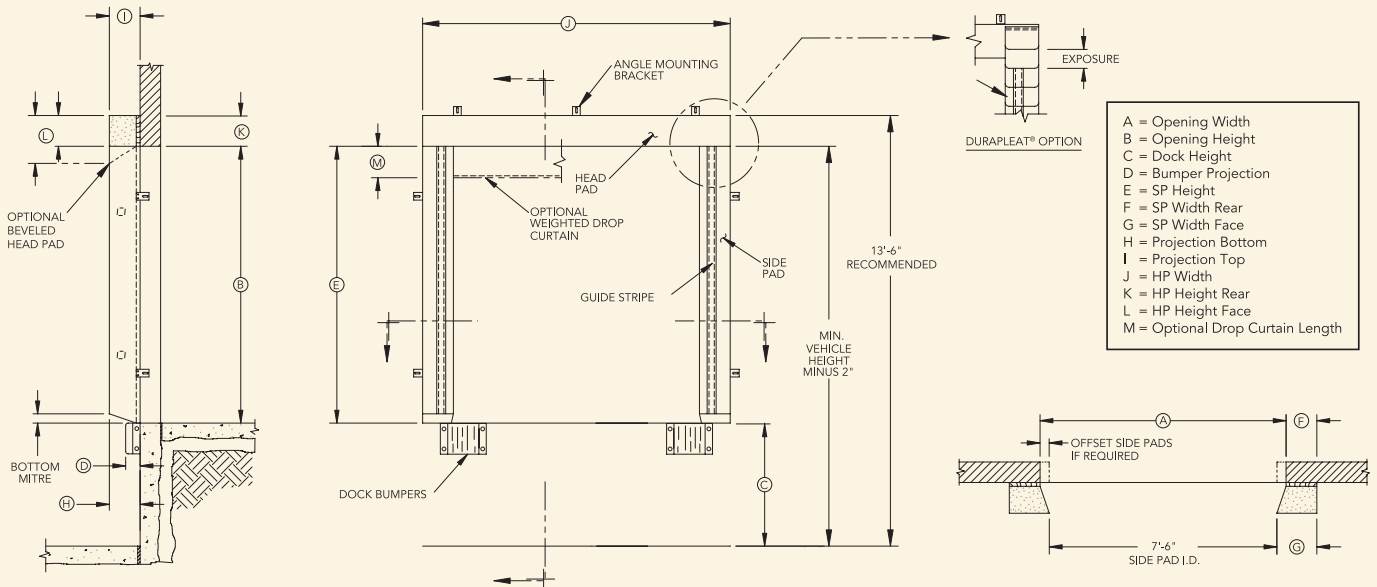
Standard unit shall consist of two side pads that mount vertically along both sides of the door opening. Unit shall have one head pad that mounts horizontally across the top of the side pads. Various pad widths, projections, tapers and bevel shapes are available.

**Options**

- Base Fabric:** (in a variety of colors)
- Truk Flex™ (heavy usage)
  - Rough Flex™ (medium usage)
  - 22 oz. Vinyl (medium usage)
  - 40 oz. Vinyl (medium/heavy usage)
  - 16 oz. Hypalon® (light – base cover only)
- Durapleat®:**
- 4" exposure
  - 8" exposure
  - 16" exposure
  - Beveled side and/or head pads
  - Tapered side pads
  - Additional projections beyond 10" standard - Drop curtains for fixed head pads

**Models**

- TS111 — 22 oz. Vinyl
- TS121 — 40 oz. Vinyl
- TS131 — 16 oz. Hypalon
- TS141 — Truk Flex™
- TS151 — Rough Flex™



**W.B. McGuire™ Company**  
 205 Broadview Street  
 P.O. Box 151  
 Upper Sandusky, OH 43351  
 Phone 1.800.262.1188  
 Fax 419.294.4980  
[www.wbmcguire.com](http://www.wbmcguire.com)