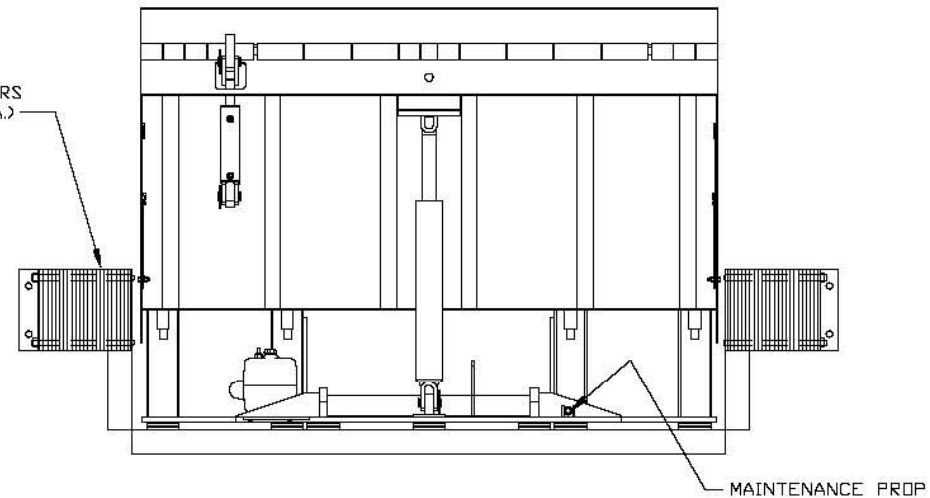
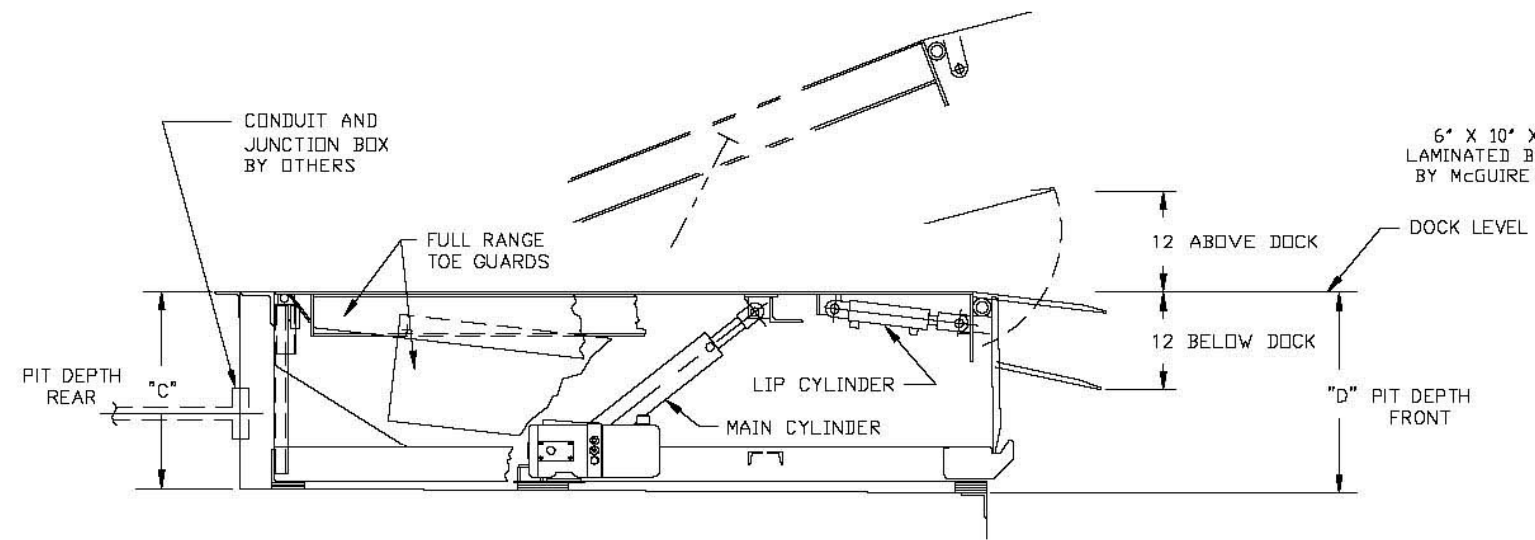


SELECT	MODEL #	NOMINAL SIZE	"A"	"B"	"C"	"D"
<input type="checkbox"/>	H6675	6'X6'	74"	63"	23 1/2'	24"
<input type="checkbox"/>	H6875	6'X8'	74"	87"	23 1/2'	24"
<input type="checkbox"/>	H61075	6'X10'	74"	111"	23 1/2'	24"
<input type="checkbox"/>	H6.5675	6.5'X6'	80"	63"	23 1/2'	24"
<input type="checkbox"/>	H6.5875	6.5'X8'	80"	87"	23 1/2'	24"
<input type="checkbox"/>	H6.51075	6.5'X10'	80"	111"	23 1/2'	24"
<input type="checkbox"/>	H7675	7'X6'	85"	63"	23 1/2'	24"
<input type="checkbox"/>	H7875	7'X8'	85"	87"	23 1/2'	24"
<input type="checkbox"/>	H71075	7'X10'	85"	111"	23 1/2'	24"

- STANDARD 75K "H" SERIES FEATURES**
- NEMA 12 CONTROLS
 - 1 1/4 HP FRAME MOUNTED SINGLE OR 3 PHASE MOTOR
 - FULL RANGE TELESCOPING TOE GUARDS
 - CROSS TRAFFIC SUPPORT
 - INTEGRAL TAMPERPROOF VELOCITY SAFETY STOP
 - LOCKOUT/TAGOUT MAINTENANCE STRUT
 - 18" YIELDABLE LIP
 - 3 WHEEL FORKLIFT PROTECTION
 - STRUCTURAL CHANNEL REAR FRAME SUPPORTS
 - STRUCTURAL I BEAM AND C CHANNEL DECK SUPPORTS
 - GREASE FITTINGS
 - NIGHT LOCK SECURITY
 - CLEAN SWEEP FRAME
 - TWO (2) 6" X 10" X 14" LAMINATED BUMPERS



OPTIONAL 75K "H" SERIES FEATURES

- AUTO RETURN TO DOCK
- 20" LIP
- YELLOW & BLACK TOE GUARD SAFETY TAPE
- RUBBER WEATHER SEALS (SIDES ONLY REQUIRED)
- BRUSH WEATHER SEALS (SIDES ONLY REQUIRED)
- QUICK CYCLE LIP EXTEND BUTTON
- MUSHROOM STYLE EMERGENCY STOP BUTTON
- CLEAN PIT (FRAME REMOVED)
- OPTIONAL BUMPERS PLEASE SPECIFY
- BL-2 BARRIER LIP
- NON METALLIC NEMA 4 CONTROL BOX (NON INTERLOCK)
- MISC

AVAILABLE VOLTAGES (SELECT ONE)

- 110/115/120/1/60
- 208/220/230/3/60
- 208/220/230/1/60
- 440/460/480/3/60

Customer:		Certified For Construction:	
Job:		By:	
Location:		Date:	
Number of Units:		Company:	
Model:		City & State:	
Size:			
Represented By:		Voltage:	
Sales Rep:		Drawing #:	

<small>TELEPHONE UNLESS OTHERWISE SPECIFIED DECIMAL DIMENSIONS FRACTIONAL DIMENSIONS - L/64 X OF JOH. S. GIBB HOLE DIMENSION - HOLE/ - DIMS JOH. S. GIBB ANGULAR DIMENSION - 1 DEG.</small>		DRAWN TSB DATE 9/11/08 SCALE NTS CHECKED TSB	McGUIRE W.B. McGUIRE Co., Inc.	McGUIRE AUTODOK 75K (CIR) H SERIES HYDRAULIC LEVELER GENERAL ARRANGEMENT DRAWING NO. PART NO. H75	REV
--	--	--	--	--	-----