

DOCK COMMUNICATION SYSTEM



- ▶ Advanced Controls of Loading Dock Equipment
- ▶ Interactive Message Display with System Information
- ▶ View Equipment Usage and Maintenance History
- ▶ Raised Dome Button Design for Ease of Use
- ▶ Fault Code Troubleshooting Display and Internal LED Lights
- ▶ Integrated Controls of all McGuire Dock Equipment and Dock Door Installed
- ▶ 3-Color Light Communication System
- ▶ NEMA 4X Enclosure
- ▶ Made in the USA

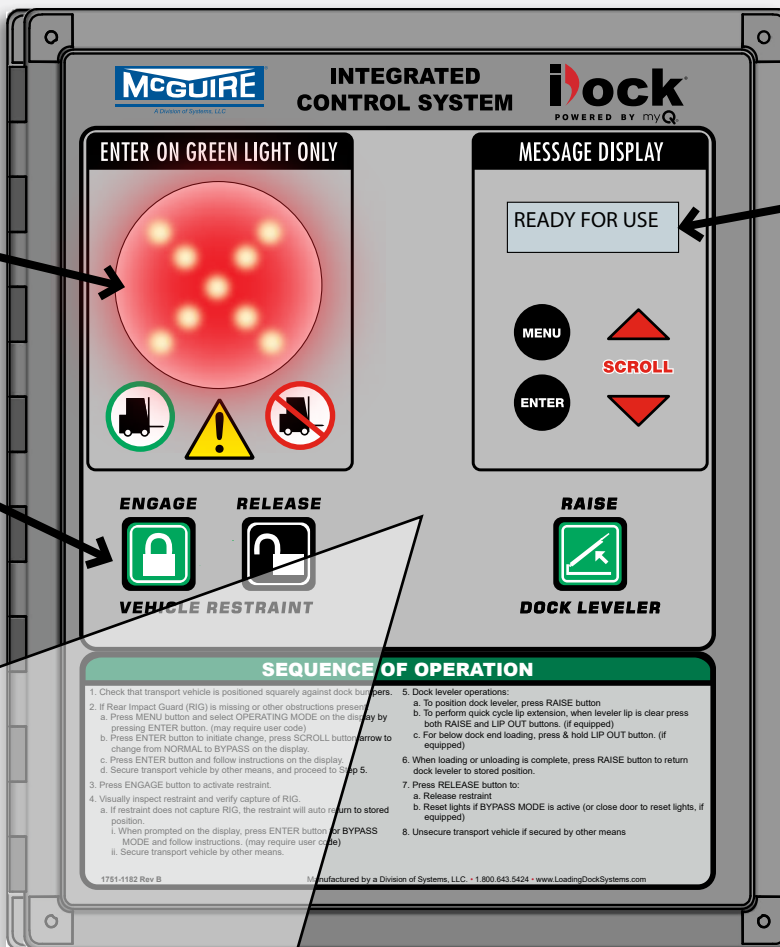
ADVANCED INTERACTIVE CONTROL OF YOUR LOADING DOCK EQUIPMENT

ADVANCED 3-COLOR LIGHT COMMUNICATION

Compared to other standard green and red systems, iDock Controls utilize an additional third amber light if a fault is detected or restraint is in bypass mode.

OPERATOR INTERFACE

Using membrane dome button technology, operators can clearly feel and hear when they press a button, confirming that the equipment will begin operation.



INTERACTIVE MESSAGE DISPLAY INCLUDES:

EQUIPMENT INFORMATION

Access information about your dock equipment, including the serial number, installation date, and the door number.

SYSTEMS INFORMATION

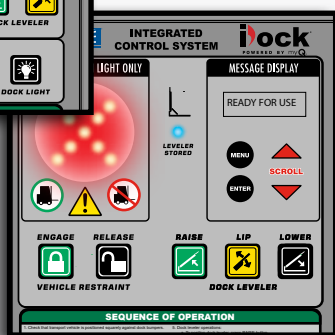
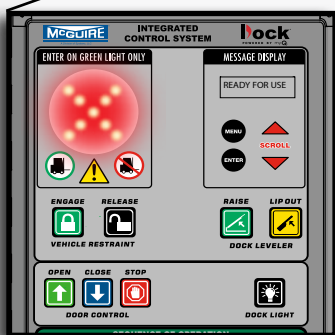
View detailed information regarding your installed dock equipment and the options that are currently active.

MAINTENANCE HISTORY

See all of your maintenance records as well as schedule a maintenance reminder that will alert you when the scheduled day has come.

COUNTERS

View your loading dock equipment statistics, such as cycle counts, optional forklift activity, faults, and more.



INTEGRATED CONTROLS

iDock Controls integrate your installed McGuire dock levelers, vehicle restraints, and other dock accessories, as well as door operators. Interlocking equipment controls provides a sequence of operation for your dock equipment, improving safety and energy efficiency.

Boost Productivity | Simplify Maintenance | Prioritize Safety | Tighten Security



A Division of Systems, LLC

W194 N11481 McCormick Drive • Germantown, WI 53022
Phone: 1.800.624.8473 • Email: sales@wbmcguire.com

www.wbmcguire.com

