



W.B. McGuire™ Company  
205 Broadview Street  
P.O. Box 151  
Upper Sandusky, OH 43351  
Phone 1.800.262.1188  
Fax 419.294.4980  
[www.wbmcguire.com](http://www.wbmcguire.com)

# Soft Sided Shelter TC900 Series Dock Shelters

*All Models*

## Installation Instructions



Do not install this product unless you read and understand the Warnings and Installation Instructions contained in this manual. Failure to do so could result in serious injury or death.

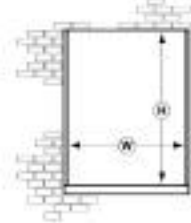
# SOFT SIDED SHELTER TC900 SERIES –

## Installation Instructions

### CHECK FIRST:

To ensure proper measurement to accommodate the Dock Shelter you are installing, check the following:

A. Check the door height and width to verify that your shelter frame is properly sized.

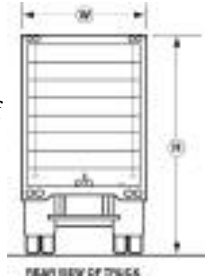


B. It is recommended that the shelter frame project 14"-18" beyond the dock bumper. (Example: At a flush dock with a bumper projection of 6", standard shelter projection should be 20"-24" for standard 11' 6" wide shelter.)

C. If the approach is not level, check to make sure shelter frame tapers to accommodate the angle of the truck.



D. Check the heights of incoming carriers that will be utilized at this door, to ensure that the shelter frame is of proper elevation to accommodate the height range of these vehicles. The top of a Soft Sided Shelter should be kept as close to 15' 0" off grade as possible.



E. In 95% of installations, the inside edge of the face of the side curtain should be 7' 0" I.D.

### ▲ WARNING

Improper lifting or attachment of seal/shelter can cause serious injury or death.

Installation requires:

- A structurally sound building wall,
- Barricades to keep people away from the area,
- Proper attachment of anchoring devices,
- Two or more people,
- A lifting device capable of lifting at least 500 lbs. at the installation angle.

If you have questions, contact your supervisor, your local McGuire™ distributor or McGuire™ at 1-800-624-8473.

### INSTALLATION:

1. Identify yourself to the appropriate on-site customer personnel. Follow customer's instructions as to: 1) the location where tools, equipment and material can be stored on site; and 2) the installation sequence for each opening. Review all job site safety programs and procedures to ensure your compliance. Obtain all appropriate permits required to perform this work.

2. Review all drawings and specifications related to this portion of the project with particular attention to special instructions and/or conditions. Verify the facility conditions to the appropriate dock related dimensions illustrated on Drawings or documents (Door width and height, dock height, distance between openings, bumper projections, drive grade, and etc.).

3. Clear installation area of all unnecessary obstructions. Cordon off vehicular and pedestrian traffic.

4. Unpack dock shelter components, checking completeness to all bills of lading, bills of materials and installation instructions. Additionally check basic unit dimensions to assure that the correct units have arrived at the job site (lengths, widths, projections and etc.).

5. Mount left and right head frame support brackets to top, rear of appropriate side pads (or rear of block out, if applicable) using #14 x 1 1/2" lg. flat head wood screws or lag screws as provided (bracket gusset to exterior of side pad). Center the side pad assemblies on the opening width, maintaining unit O.D. Be sure to keep the side pads square and plumb. Secure each side pad to the building face utilizing six (6) angle mounting brackets, 5/16" x 2" lg. lag screws, 5/16" flatwashers and appropriate anchors.

6. Position head frame level, over side pads, against building face, into gusseted steel support brackets at both ends and secure frame to brackets with (4) or (6) 5/16" x 2" lg. lag screws and 5/16" flatwashers. Secure head frame to wall with appropriate anchors through rear wood member.

7. Check condition of above assembled components to assure they are plumb, square and level. Shim or adjust as required.

8. Attach side curtain assemblies to faces of side pads utilizing the 3/8" black, steel flatwashers and 3/8-16 hex locknuts provided to secure. (Face reinforcements and guide stripes to be at bottom.) Do not over torque nuts.

9. Tension cords have been factory attached to the inside, top corners of the side curtains. Attach the free ends of these tension cords to the screw eyes (also factory attached) directly above on the front, inside face of the head frame, Close S-hooks.

10. Position fabric flap at top, front of each side pad against the face of the head frame. Pull up so that flap is tensioned and secure with #14 x 1 1/2" lg. flat head wood screws through grommetted holes provided.

11. Fasten 3/8" Dia. x 4" hanger bolt assembly into center hole of front head member, using deep-well socket so that washer and hex nut are submerged in counter bored hole (pre-drill center cross member 1/4" Dia. x 1 1/2" deep). Resulting stud extension (3/8-16 x 1" approx.) is to be used in securing center grommet of head curtain and center of aluminum angle together with washer and locknut.

Secure three (3) piece head curtain to the head frame by means of 5/16" x 2 1/2" hex head cap screws, using a flat washer at the head of the cap screw, through the aluminum angle, the grommets in curtain, the hole in the stays, predrilled holes in wood member, washer, then locknut. Mount smaller end curtains first. (Distinguish right hand and left hand end curtains by taper at top. This should coincide with raked head frame.) Mount center curtain section next, in front of end curtains. The outermost mounting hold at each end of the center curtain will share a mounting screw with the innermost hole in each end curtain.

12. Install bottom pad to interior face of side pads by lacing with ropes provided through grommetted holes in matching fabric flaps. ("No Step" label to be legible from dock.) In the event that a fabric covered wood blockout has been furnished with the side pad, nail attach the rear portion of the bottom pad flaps to the blockout through the grommetted holes provided.

13. Apply silicone based caulking over top exterior of the head frame. Bead size to be adequate for adhesion to the continuous rear portion of the head frame and adjacent wall surface.

14. Clean unit and clear area of all cartons, scrap and debris generated as a result of the dock seal installation.

NOTE 1) When installing the anchors described within, be sure to set anchors in accordance with the anchor manufacturer's recommended installation procedures to ensure maximum holding strength.

### SUGGESTED MOUNTING METHODS:

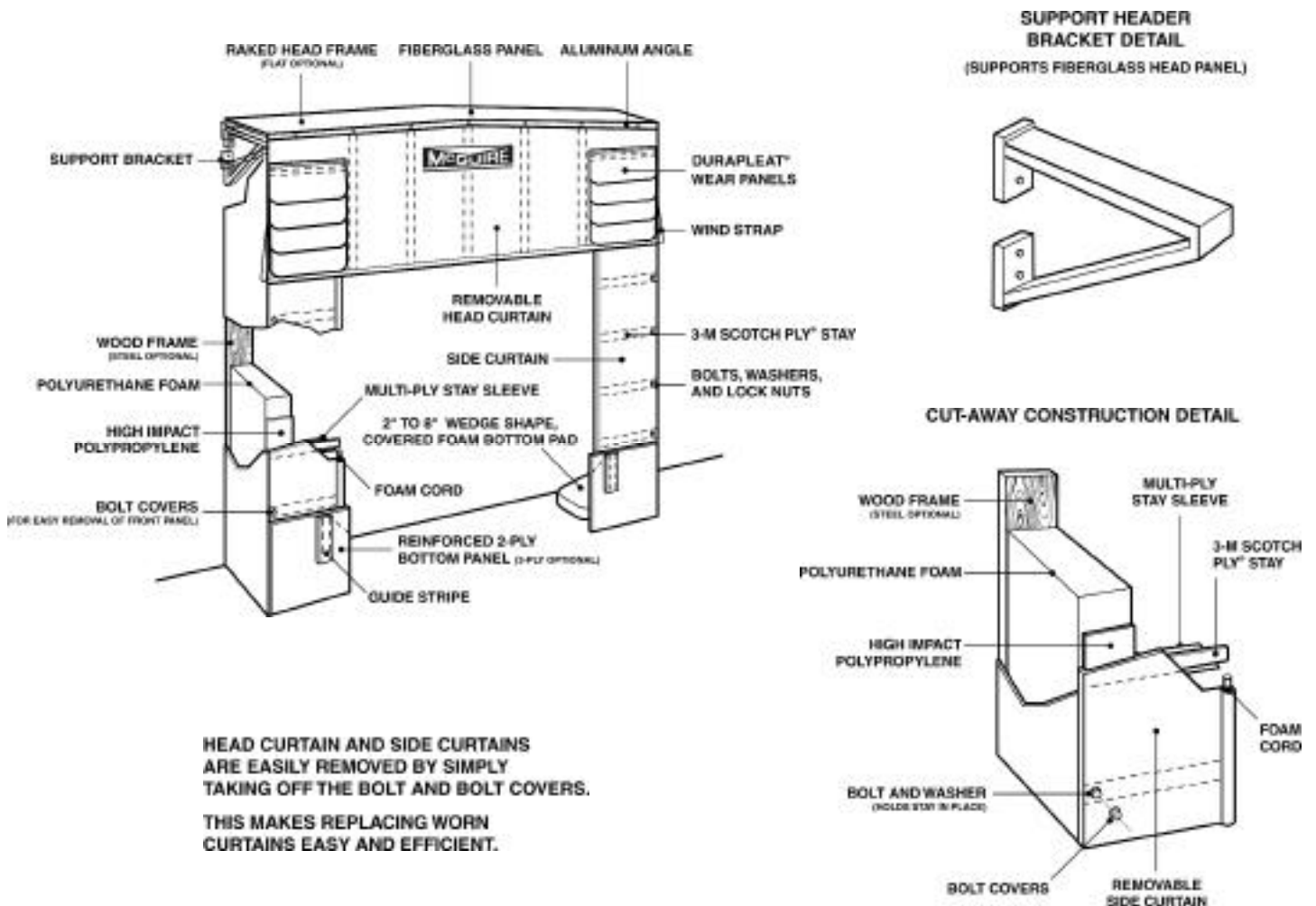
(Mounting anchors not included.)

**Concrete or Brick Wall:** Try to hit mortar joints. Use 1/2" or 3/8" x 3" expansion anchors. Use through-bolt fastening if anchors will not hold, 3/8" threaded rod is recommended.

**Precast Concrete:** Same as above.

**Metal Skin Building:** Through-bolt fastening as above. Use a back-up plate (steel or wood) to support bolts or anchor through existing building horizontal and vertical structural members when possible.

**NOTE:** Dock Seals must have adequate bumper protection, 4" minimum.



---

## **WARRANTY:**

McGuire™ warranties extend only to the product itself.

McGuire™ DISCLAIMS all liability arising out of the workmanship, methods and materials used by the installer. WARRANTIES, whether express or implied, relating to workmanship and materials used in connection with the installation of McGuire™ products are specifically DISCLAIMED.

Note: Improper installation of anchoring devices or installation into aged or unsound concrete could result in premature product wear, product failure, or property damage.

TC900 Dock Shelter are custom built for each door. installation procedures are the same for all TC900 Dock Shelter regardless of size.

We have asked your local representative to present this information to you, inspect the installation, and familiarize you and your employees with proper operation of the product.

McGuire™ expressly warrants that any Dock Seal or Shelter sold by it will be free from defects in material and workmanship under normal use for a period of one (1) year from the earlier of, 1) 60 days after date of shipment, or 2) the date of installation of the Dock Seal or Shelter by the original purchaser, provided the product is properly applied and installed. In the event the Dock Seal or Shelter proves defective in material or workmanship, McGuire™ will, at its option:

1. Replace the Dock Seal or Shelter or the defective portion thereof without charge to the purchaser; or 2. Alter or repair the Dock Seal or Shelter, on site or elsewhere, without charge to the purchaser.

The warranty stated in the preceding paragraph is that expressed by McGuire™ AND IS IN LIEU OF ALL GUARANTEES AND WARRANTIES, EXPRESSED OR IMPLIED BY ANYONE OTHER THAN McGUIRE™. The warranty does not cover any failure caused by improper installation or application, abuse, or negligence. Parts requiring replacement due to damage resulting from vehicle impact, abuse or improper installation are not covered by this warranty. Seller assumes no responsibility or liability for (1) consequential damages of any kind which result from the use or misuse of the Dock Seal or Shelter, (2) damage or failure resulting from the use of unauthorized replacement parts or modification of the Dock Seal or Shelter; (3) damage resulting from the misuse of the Dock Seal or Shelter. **THERE ARE NO WARRANTIES, EXPRESSED OR IMPLIED, WHICH EXTEND BEYOND THE DESCRIPTION ON THE FACE HEREOF, AND THERE IS NO WARRANTY OF MERCHANTABILITY OR OF FITNESS FOR A PARTICULAR PURPOSE.**

McGuire™ warranties extend only to the Dock Seal or Shelter itself.

### **McGUIRE™ DISCLAIMS:**

- ALL WARRANTIES, whether expressed or implied, relating to workmanship and materials used in connection with the installation or maintenance of the Dock Seal or Shelter.
- All liability arising out of the workmanship, methods and materials used in the installation or maintenance of the Dock Seal or Shelter.
- All liability for premature product wear, product failure, property damage or bodily injury arising from improper installation or maintenance of the Dock Seal or Shelter.