



A Division of Systems, LLC

VEHICLE RESTRAINTS



TPR UNILOCK® SERIES

An upgrade from the standard TPR, the UniLock provides an advanced cam design that rotates the hook away from the trailer's Rear Impact Guard (RIG) to release "RIG Wedge" pressure.

SAFETY FEATURES

- Locking mechanism to prevent the restraint from disengaging the trailer's RIG when pressure is applied.
- Universally effective on any obstructed Rear Impact Guard, including intermodal trailers with a cover plate.
- LED 3-light system for advanced communication between the truck driver and dock attendant.

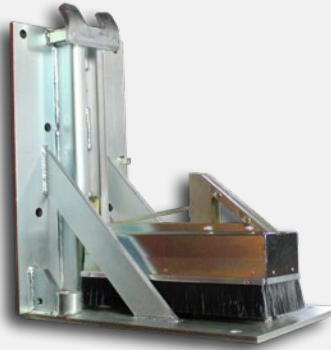


TPR® SERIES

The TPR is a push-button operated, trailer-positioned vehicle restraint that is mounted to the face of the dock and utilizes a rotating hook to secure the trailer's Rear Impact Guard (RIG).

SAFETY FEATURES

- Unit automatically positions itself when lowered by the trailer's RIG.
- Motor and gears keep hook continuously engaged with the trailer's RIG.
- LED 3-light system for advanced communication between the truck driver and dock attendant.

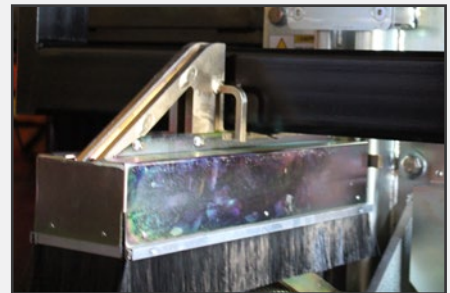


STOP-TITE® SERIES - AUTOMATIC & MANUAL

The Stop-Tite is a non-impact vehicle restraint that is mounted to the drive or dock face and is push-button or manually operated.

SAFETY FEATURES

- Low profile, non-impact design
- Hydraulic or manual operation to vertically raise the restraint and engage the trailer's Rear Impact Guard.
- RIG sensor bar notifies the operator with an audible alarm if the restraint is not securely engaged to the trailer's Rear Impact Guard.



UXL SERIES

The UXL is a wheel-based vehicle restraint with light communication. The chock system is universally effective for most applications.

SAFETY FEATURES

- Steel teeth engage ground plate to prevent pullout.
- Automatic light sequencing with interior/exterior red/green lights always in opposition.
- Exterior and interior audible alarms if the UXL is not in a safe position during loading.
- Full communication package with lights, safety signs and control panel for additional safety communication.





A Division of Systems, LLC

VEHICLE RESTRAINTS



UNICHOCK SERIES

The UniChock is a wheel-based vehicle restraint with light communication. The chock system is universally effective for most applications.

SAFETY FEATURES

- Strong grip to limit sliding.
- Audible alerts of an unsafe position of the chock during loading.
- LED 3-light system for advanced communication between the truck driver and dock attendant.



iDock CONTROLS

ADVANCED INTERACTIVE CONTROL OF YOUR LOADING DOCK EQUIPMENT

INTERACTIVE MESSAGE DISPLAY Includes equipment information, system information, maintenance history and your loading dock equipment statistics, such as cycle counts, optional forklift activity, faults, and more.

INTEGRATED CONTROLS iDock Controls can integrate your installed Systems dock levelers, vehicle restraints, and other dock accessories, as well as door operators. Interlocking equipment controls provides a sequence of operation for your dock equipment, improving safety and energy efficiency.

ADVANCED 3-COLOR LIGHT COMMUNICATION Compared to other standard green and red systems, iDock Controls utilize an additional third amber light if a fault is detected or restraint is in bypass mode.

myQ DOCK MANAGEMENT

ANALYZE YOUR LOADING DOCK ACTIVITY ONLINE



Login to your online account at myQ.com to review and analyze visual reports generated from your iDock controls and sensors. Enhance your loading efficiency and improve turn times.

ONLINE REPORTS INCLUDE:

- **REAL-TIME ACTIVITY** Check the current status of each dock and time stamps of live truck-at-dock sessions.
- **LOADING DOCK ANALYTICS** Compare the efficiency and activity of any docks during a selected period of time.

LoadingDockSystems.com/iDock