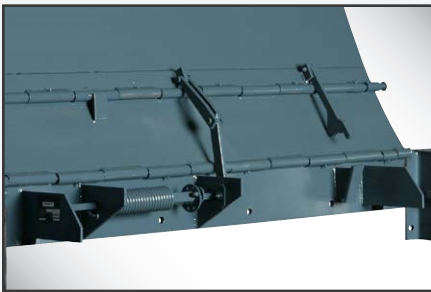


MECHANICAL EDGE OF DOCK LEVELER

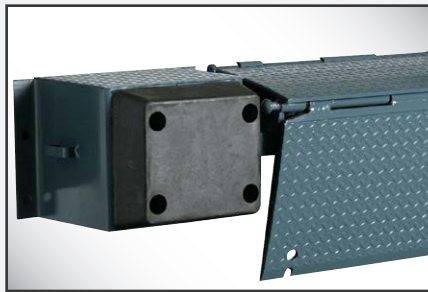


**MEDLF7220 shown with lift free lever operation and standard bumper block assembly*

- ▶ Bridges the gap between building and truck where a minimal variance exists between dock and truck with a recommended working range of +/-3" and a maximum operating range of +/- 5" above and below dock level.
- ▶ "Lift Free" Levelers make operation of the leveler smooth and easy.
- ▶ Operation is a simple two step process. Just pull back on the handle to lift and push forward to extend unit into the trailer.
- ▶ Eliminates extreme bending, pushing, and lifting associated with old style edge of dock levelers.
- ▶ Placement of the lifting bar keeps dock attendant in safest position to operate leveler.
- ▶ Automatic return to stored position once the trailer departs the dock
- ▶ Made in the USA



McGuire's exclusive four gusset support in stored position and end load position.



Bumper block assembly with safety tread plate-same as deck and lip.



McGuire "Lift Free" lever action means no bending, lifting or pulling.

OPERATION

The platform is raised when the dock attendant inserts an operating handle into the operating slot and pulls back until the handle reaches the activation position to engage the cycle. The operating handle is then pushed forward until the lip extends and rests on the truck bed. The attendant removes the operating handle and stores it for convenient future reuse.

After loading or unloading is complete, the attendant can insert the operating handle into the operating slot and pull the leveler back until the tip of the lip just clears the back end of the truck bed, then push the leveler forward and the MEDLF will go into the stored position. Alternatively, the MEDLF will automatically return to the stored position when truck pulls away. It is a simple, one man operation that does not require any bending or lifting.

SAFETY FEATURES

- Mechanical torsion or extension springs with lever lift operation means no bending, lifting or pulling
- A Minimum of (4) Solid Steel Gussets provide support when end-loading of trailers is required.
- Safety Tread Plate on top of bumper bracket assembly provides same skid resistant surface as deck and lip.

VEHICLE RESTRAINTS AND ACCESSORIES

For a safer loading dock, all McGuire levelers can be equipped with a light communication system and vehicle restraints, which help prevent unexpected trailer departure from the loading dock. Safety barriers are also available to prevent forklift trucks from driving over the dock edge.



CONSTRUCTION

The MEDLF Series has a superior structural criteria for an Edge-of-Dock leveler. Cold-rolled steel hinge pins and secondary steel gussets for added strength and extended life are coupled with a leveler lip and deck constructed from high-strength 55,000 psi minimum yield steel safety tread plate. Grease fittings are also standard throughout the hinge area. This leveler has a maximum Comparative Industry Rating (CIR) of 35,000 lbs.

DOCK BUMPERS

Two heavy duty 4" thick x 12" high x 13" wide molded rubber bumpers as standard are mounted to bumper block assemblies to help protect the deck plate and building from approaching trailers. Bumper block assemblies are constructed of formed steel and incorporate a full height internal gusset for extra support.

MEDLF Series Common Options	
▶	17" Lip for Refrigerated Trailers
▶	Tapered Lip (Tapered at Sides)
▶	Abrasive Deck Surface
▶	Low Profile Design (flat Center Plate) Pallet Jack Applications
▶	Recessed EOD with Laminated Bumpers(1 pair)(in lieu of standard)
▶	Steel Face Bumpers(1 pair)(in lieu of standard)
▶	No Bumpers/Bumper Blocks(1 pair)
▶	Other Options Available - Consult Factory
▶	Top-of-Dock Series Alternative

Model - Nominal Size	
▶	MEDLF 66"
▶	MEDLF 72"
▶	MEDLF 78"
▶	MEDLF 84"

Capacity Range 20,000 - 35,000 lbs.



A Division of Systems, LLC

W194 N11481 McCormick Drive • Germantown, WI 53022
Phone: 1.800.624.8473 • Email: sales@wbmcguire.com

www.wbmcguire.com

DISTRIBUTED BY: