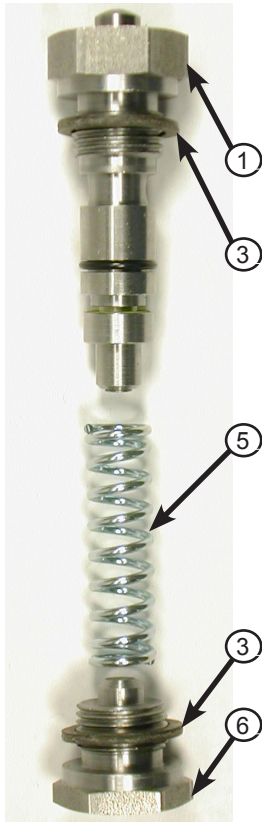
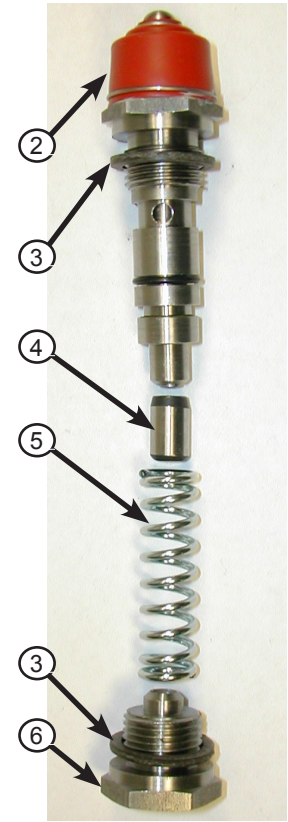
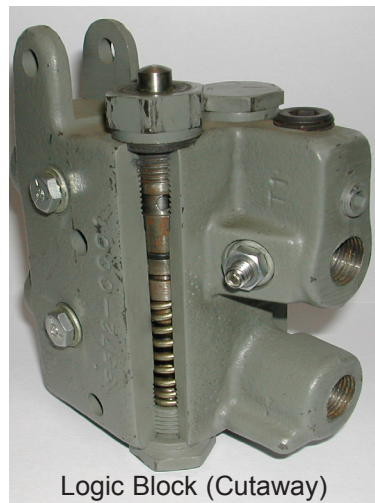


Spool Valve Parts Breakdown



ITEM	DESCRIPTION	PART NUMBER
1	Spool Valve Assembly, Standard	9574-0001
2	Spool Valve Assembly, C.W. Package	9574-0002
3	Gasket (Included with Items 1 & 2)	9572-0003
4	Dowel Pin	9572-0013
5	Spring	9572-0004
6	Plug	9572-0002



TROUBLESHOOTING GUIDE

TROUBLE	POSSIBLE CAUSE	SOLUTION
Raising leveler from stored position, lip extends immediately after clearing keepers.	Spool valve extending through top of logic block may be corroded or stuck in down position. Oil port to lip cylinder may be held open.	Access logic block manually free-up operating arm and spool. If needed, remove arm and lubricate spool with penetrating oil. Keep top of spool valve and arm pivot points lubricated with white lithium grease to prevent corrosion.
On boards with Auto-Return-To-Dock Feature: from below-dock position with lip folded, board raises, lip extends slightly, but leveler repeatedly returns to below dock position.	Spool valve extending through top of logic block may be corroded or stuck in down position. Oil port to lip cylinder may be held open.	Access logic block, manually free-up operating arm and spool. If needed, remove arm and lubricate spool with penetrating oil. Keep top of spool valve and arm pivot points lubricated with white lithium grease to prevent corrosion.

*If spool valve continues to bind, replace spool valve assembly. Typical Spool Valve Replacement Time: 30 min.

PREVENTATIVE MAINTENANCE

Keep top of spool valve and arm pivot points lubricated with lithium grease to prevent corrosion. Apply white lithium grease to top of spool valve and pivot point on arm assembly.