



- ▶ Services A Wide Variety of High Volume Traffic with Varying Widths & Heights
- ▶ Impact Absorbing Foam Filled Side Frames Eliminate Wood & Fiberglass Side Frames & Allows the Use of Standard Bumpers in Place of Steel Guards
- ▶ Integral Structural Supported Head Member is Translucent to Allow Light & Raked for Drainage
- ▶ Provides Full Unimpeded Access to Trailer
- ▶ Yellow Guide Stripes to Assist Positioning of Trailers
- ▶ 2 Added Layers of Fabric on Side Curtains Reinforce Bottom & Prolong Life
- ▶ Flexible ScotchPly® Stays Enable Curtain to Tightly Seal Against Trailer
- ▶ Durapleat®(s) on the Outer Edge Protect Against Tears
- ▶ Foam Bottom Draft Pads At Each Side Help Prevent Air Flow Into the Loading Dock Area
- ▶ Wide Selection of Highly Durable Fabrics & Wear Surfaces to Maximize Durability

**Specifications**

Dock shelters shall be Series TC \_\_\_\_\_ as provided by W.B. McGuire™ Company. Each unit shall be designed to accommodate an opening size up to \_\_\_\_\_ wide x \_\_\_\_\_ high; having a \_\_\_\_\_" dock height; equipped with \_\_\_\_\_" projection dock bumpers and a level drive approach. Unit shall be designed to service vehicles ranging in height from \_\_\_\_\_ to \_\_\_\_\_. Each unit shall be constructed having the following minimum dimensions: 12'-0" wide x 11'-0" high x 18" projection.

Side curtains shall be reinforced with multi-ply bottom panels, equipped with a highly visible guide stripe. Side curtains shall be attached to and removable from the foam side frames by the means of corrosion resistant, locking fasteners that engage factory installed threaded studs. Head curtain shall include overlapping pleats at each end. Side curtain edges shall encase a continuous closed cell neoprene cord. The top section of each side curtain to include a full "Z" stay pattern. All curtains shall encase 3M "Scotchply®" stays enclosed by multilayer reinforcement sleeves. Stays with a maximum of 16" O.C. in side curtains and a 20" maximum O.C. in head curtain.

Shelter shall consist of (2) fabric covered polyurethane foam side frames, which are to be chemically welded to a 2" thick, pressure treated, kiln dried before and after treating (KDAT) wood frame. At the point of attachment, the stay shall be through bolted to the polypropylene through the grommetted fabric and the stay.

Shelter shall include (1) rigid head frame constructed of select structural grade, pressure treated lumber, kiln dried before and after treating, having translucent fiberglass secured to the exterior by the means of self sealing wood screws (staples not acceptable). The 2" x 6" head frame shall be sloped from center for drainage. Exterior head frame corner to be trimmed with aluminum angle that shall be through bolted to the frames, through the aluminum trim, grommetted fabric and the stay. (Lag screw attachment not acceptable).

One pair of covered foam bottom draft pads of an 8" to 2" wedge design, to be furnished per shelter. All hardware shall be galvanized steel.

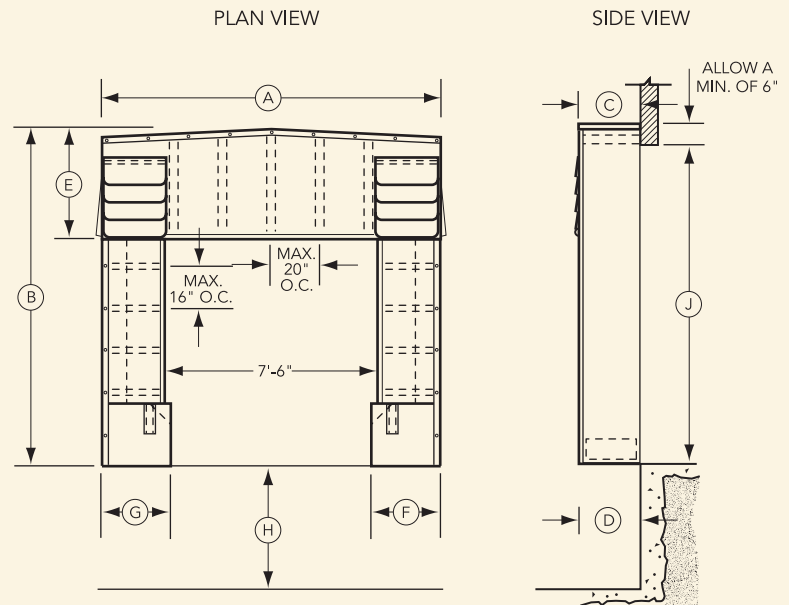
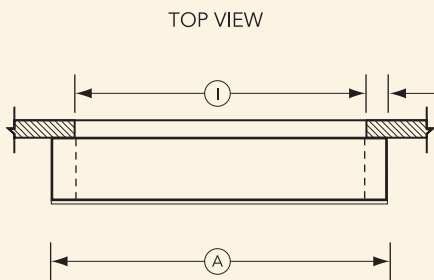
**Options**

- Base Fabric:
- Max Flex™ (heavy usage)
  - Truk Flex™ (heavy usage)
  - Rough Flex™ (medium usage)
  - 22 oz. Vinyl (medium usage)
  - 40 oz. Vinyl (medium/heavy usage)

- Options:
- Additional projections beyond 18" standard
  - Tapered units



- A = Unit Width
- B = Unit Height
- C = Unit Projection Top
- D = Unit Projection Bottom
- E = Curtain Drop
- F = Side Panel Width
- G = Side Panel Width
- H = Dock Height
- I = Opening Width
- J = Opening Height



**W.B. McGuire™ Company**  
 205 Broadview Street  
 P.O. Box 151  
 Upper Sandusky, OH 43351  
 Phone 1.800.262.1188  
 Fax 419.294.4980  
[www.wbmcguire.com](http://www.wbmcguire.com)