

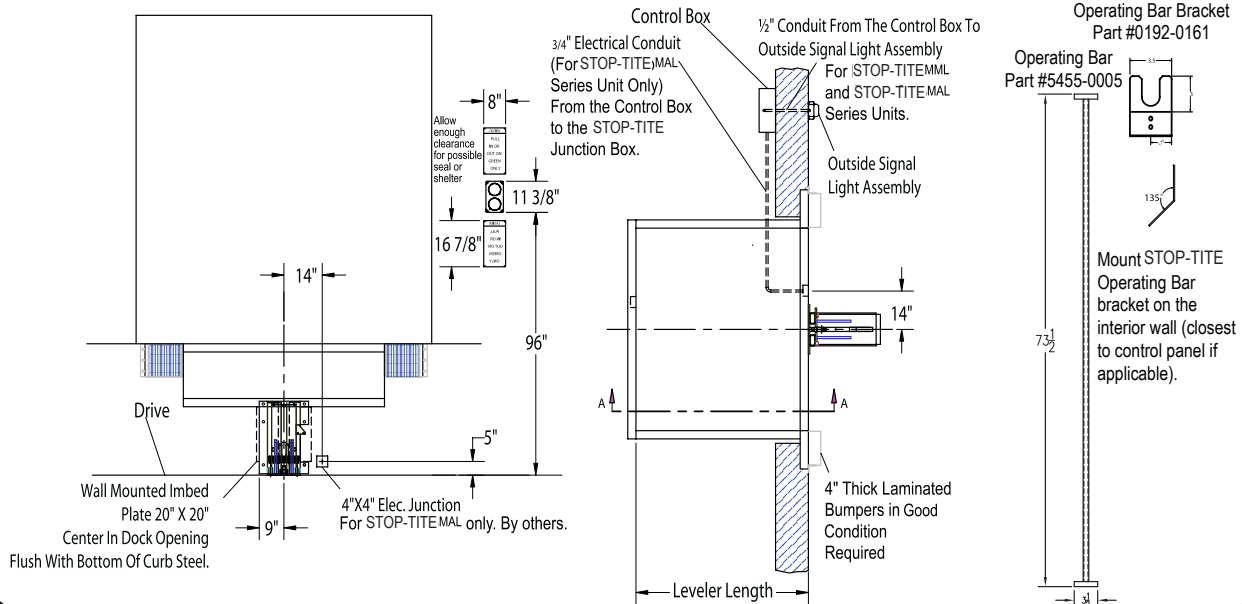


A Division of Systems, Inc.

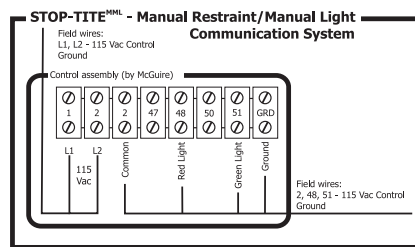
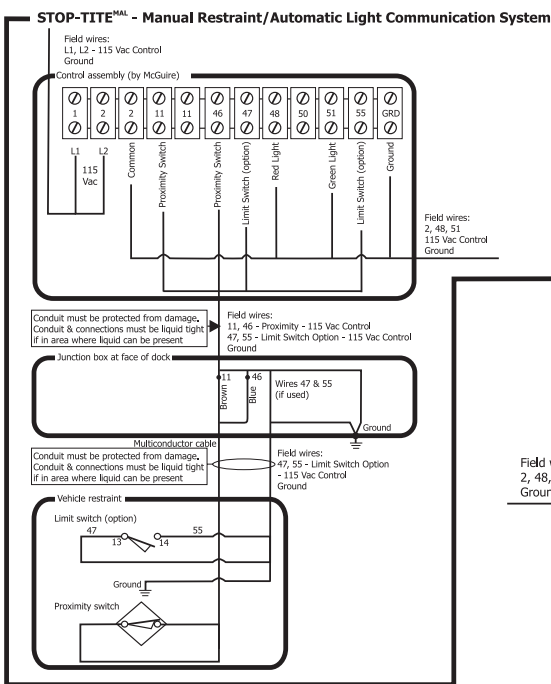
STOP-TITE® SERIES INSTALLATION OVERVIEW

MANUAL VEHICLE RESTRAINT

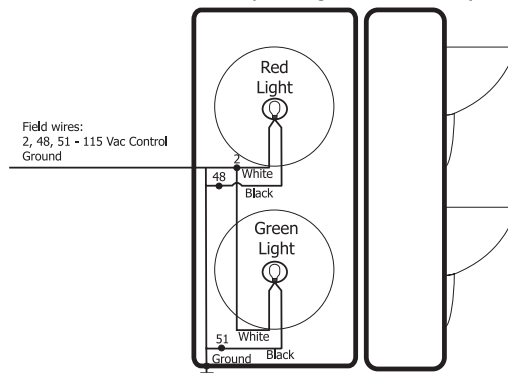
STOP-TITE® Overview



Optional Light Communication System



Outside signal light assembly by McGuire included with optional Light Communication Systems



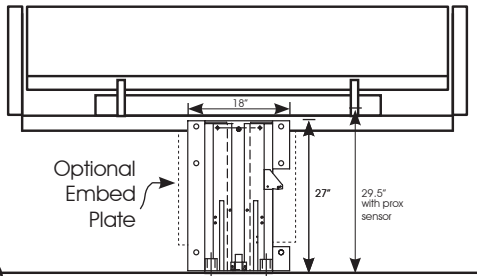
For comprehensive installation instructions of the Manual STOP-TITE™ read and understand the Installation and Operation Manual.

IO STM 2/08

VEHICLE RESTRAINT

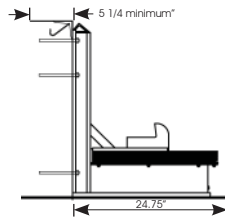
MANUAL VEHICLE RESTRAINT

Concrete Dock Face (Standard Installation)



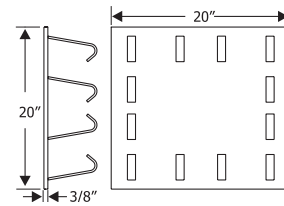
Wedge Anchors Method

Using back plate as a guide, drill six (6) holes for wedge anchors (3/4" x 5 1/4" min.) (Kit #2103-0003)

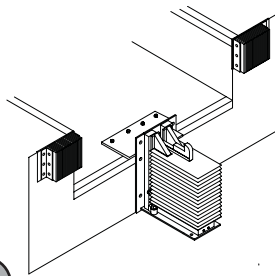


Wall Embed Method

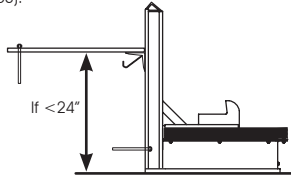
Weld three sides of STOP-TITE back plate to the optional embed mounting plate (Part #7953-0119) with ten (10) 4" long 1/4" fillet welds.



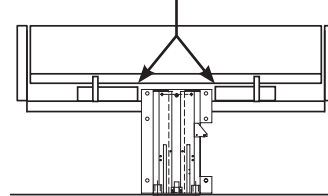
Low Pit Floor (Distance from pit floor to drive under 24")



Anchor pit floor mounting plate (minimum 3/8" x 20"W x 8"D) (Part #9414-0056) with four (4) (3/4" x 5 1/4" min.) wedge anchors. Weld mounting plate to curb steel and back plate of STOP-TITE with a continuous 1/4" fillet weld. Anchor back plate of STOP-TITE to dock face with a minimum of four (4) (3/4" x 5 1/4" min.) wedge anchors (Kit #2103-0003).



Trim or cut front frame member when necessary to allow for pit floor mounting plate.



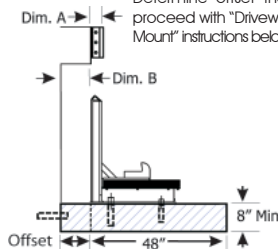
Cantilevered Dock (For bumper projection >4" or cantilevered dock or Edge-of-Dock leveler)

To determine size offset required, take total effective bumper projection (bumper size plus any cantilever) and subtract 4".

Offset Formula			Offset
Dim. A Bumper Projection	Dim. B Cantilever		
4"	+ Dim B	-4"	= Offset
6"	+ Dim B		
10"	+ Dim B		
15"	+ Dim B		

Driveway Mount

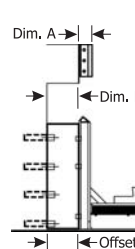
Determine offset then proceed with "Driveway Mount" instructions below.



Wall Mount

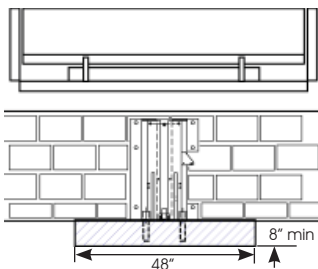
For filler requirements from 1 1/2" to 7 1/2" use cantilever bracket #9414-0052 and anchor cantilever bracket to the dock face or weld to embedded mounting plate (Part #7953-0119)

For filler requirements for 8 3/4" to 13 3/4" use cantilever bracket #9414-0053 and anchor cantilever bracket to the dock face (3/4" Dia. x 5 1/4" min.) (Kit #2103-0004) or weld to embedded mounting plate (Part #9414-0052).



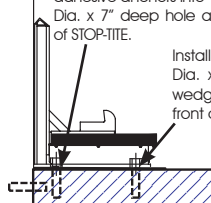
Driveway Mount (Recommended when dock face is unsuitable for STOP-TITE® Mounting)

Driveway mount requires attachment to a concrete drive greater than 8" thick. For asphalt drive, pour 48" x 48" x 8" (min.) concrete pad and include six (6) 3/4" dowels into foundation wall. Then proceed with adhesive anchors or weld plate embed.



Adhesive Anchors Method (Kit #9414-0058)

Install two (2) 1" Dia. adhesive anchors into 1-1/8" Dia. x 7" deep hole at rear of STOP-TITE.



Install two (2) 3/4" Dia. x 5 1/4" min. wedge anchor at front of STOP-TITE.

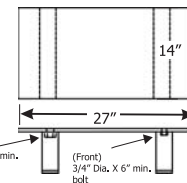
Drive Embed Method

Weld Method

Properly locate and level the drive embed weld plate (Part #7953-0059) in the drive approach. Observe cantilever conditions for proper positioning. Weld restraint to embed plate with a continuous 1/4" fillet weld.

Bolt on Method

Properly locate and level the drive embed plate (Part #9414-0057) in the drive approach. Observe cantilever conditions for proper positioning. Using the bolts included, bolt the restraint to the embed plate.



Consistent with our policy of continuing product improvement, we reserve the right to change product specifications without notice or obligation.

McGuire • Division of Systems, Inc. • W194 N11481 McCormick Dr. • P.O. Box 309 • Germantown, WI 53022
Phone: 800.624.8473 • Fax: 262.255.9399 • www.wbmcguire.com