



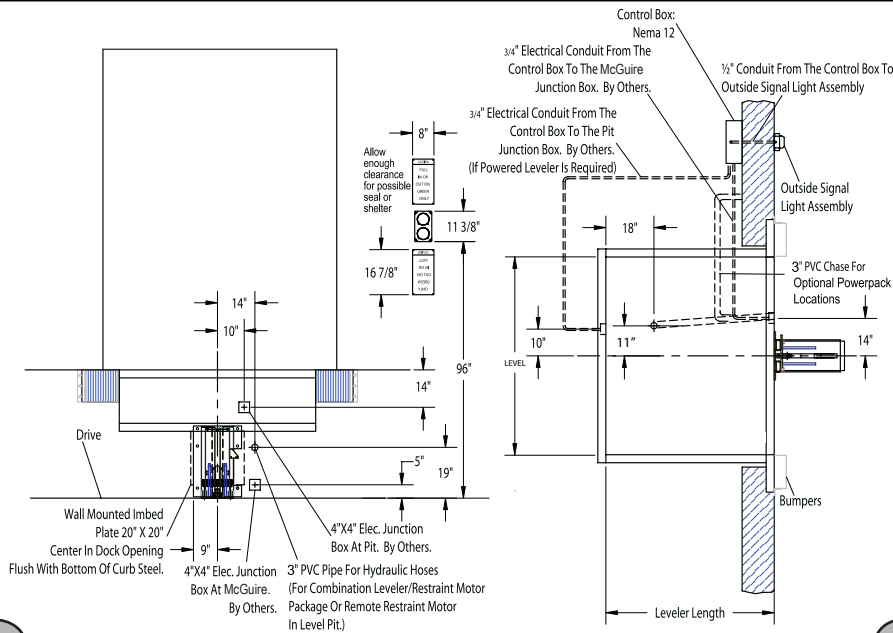
A Division of Systems, Inc.

# STOP-TITE® SERIES

## INSTALLATION OVERVIEW

### AUTOMATIC VEHICLE RESTRAINT

#### STOP-TITE® Overview



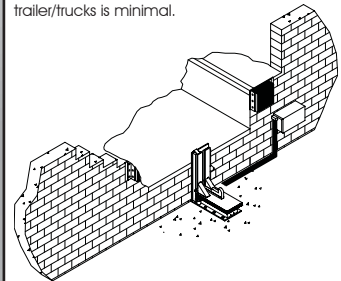
For comprehensive installation instructions of the Automatic STOP-TITE (STOP-TITE™) read and understand the Installation and Operation Manual.

#### Powerpack Location Options

Coordinate powerpack location and hose length for proper placement.

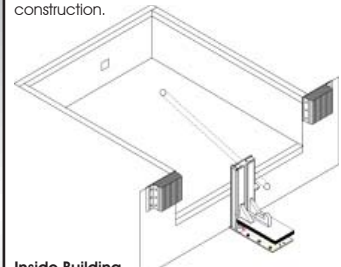
##### Dock Face

Appropriate location when the likelihood of flooding, snow removal and damage from trailer/trucks is minimal.



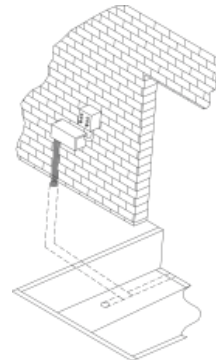
##### Under The Dock Leveler

When under the dock location is used, make certain to locate the powerpack where leveler will not interfere in below dock conditions. The routing of hydraulic and electrical lines from the powerpack to the restraint are best placed through min. 3" PVC (hydraulic) and 3/4" conduit (electrical) chase during pit construction.



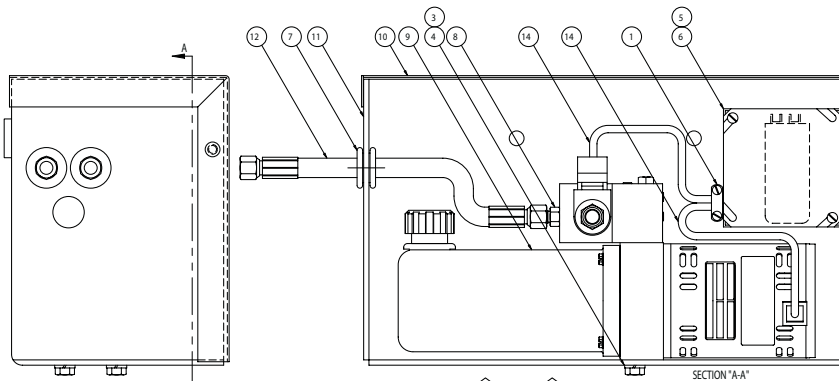
##### Inside Building

Locate powerpack to minimize obstruction potential. Hydraulic and electrical lines from the Powerpack to the restraint are best placed through min. 3" PVC (hydraulic) and 3/4" (electrical) chase during pit construction.

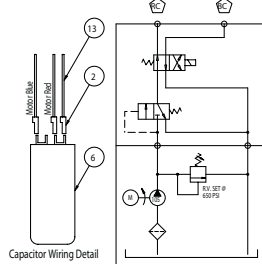


#### STOP-TITE™ Powerpack

Conduit, flexible or rigid, must be connected between the limit switch on the restraint and the powerpack. Wiring to and from the restraint must be limited to restraint wires only. Do not run high voltage lines through the same conduit as restraint wires. Conduit and associated hardware to complete wiring and mounting of powerpack are to be supplied by others.



BILL OF MATERIAL			
ITEM	QTY	PART NO.	DESCRIPTION
1	1	1431-0011	Connector - 2-Screw
2	3	1431-0086	Insulated Terminal
3	2	2101-0017	Hex Head Capscrew
4	2	2101-0140	Lock Washer
5	1	2751-0016	Cover - 1-Box
6	1	3051-0058	Capacitor - Motor Start
7	2	4431-0001	Grommet
8	2	9301-0164	Fitting Conn Str Thrd
9	1	9395-0401	Powerpac - STOP-TITE®
10	1	9391-0039	Cover - STOP-TITE®
11	1	9393-0025	Powerpac Mounting Weldment
12	2	9904-0097	Hyd Hose Assy - 1/4" I.D. X 24.00
13	1	RS13-0050	Wire
14	2	RS98-0090	Split Flex Conduit



NOTE	DESCRIPTION
BC	CONNECT TO BASE END OF RELEASE CYL.
RC	CONNECT TO ROD END OF RELEASE CYL.



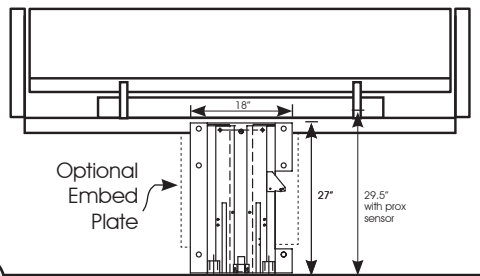
A Division of Systems, Inc.

# STOP-TITE® SERIES

## INSTALLATION OVERVIEW

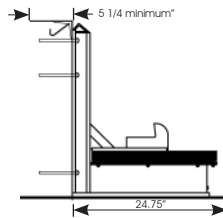
### AUTOMATIC VEHICLE RESTRAINT

#### Concrete Dock Face (Standard Installation)



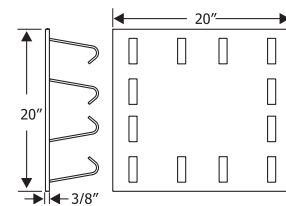
##### Wedge Anchors Method

Using back plate as a guide, drill six (6) holes for wedge anchors (3/4" x 5 1/4" min.) (Kit #2103-0003)

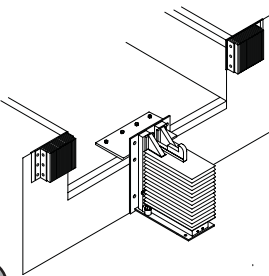


##### Wall Embed Method

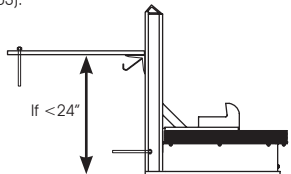
Weld three sides of STOP-TITE back plate to the optional embed mounting plate (Part #7953-0119) with ten (10) 4" long 1/4" fillet welds.



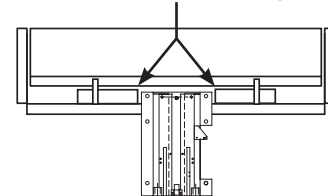
#### Low Pit Floor (Distance from pit floor to drive under 24")



Anchor pit floor mounting plate (minimum 3/8" x 20"W x 8"D) (Part #9414-0056) with four (4) (3/4" x 5 1/4" min.) wedge anchors. Weld mounting plate to curb steel and back plate of STOP-TITE with a continuous 1/4" fillet weld. Anchor back plate of STOP-TITE to dock face with a minimum of (4) 3/4" x 5 1/4" wedge anchors (Kit #2103-0003).



Trim or cut front frame member when necessary to allow for pit floor mounting plate.

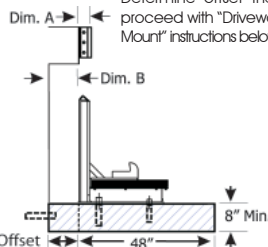


#### Cantilevered Dock (For bumper projection > 4" or cantilevered dock or Edge-of-Dock leveler)

To determine size offset required, take total effective bumper projection (bumper size plus any cantilever) and subtract 4".

Offset Formula			
Dim. A Bumper Projection	Dim. B Cantilever		Offset
4"	+ Dim B	-4"	= Offset
6"	+ Dim B		
10"	+ Dim B		
15"	+ Dim B		

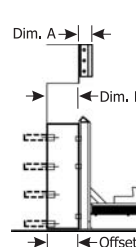
**Driveway Mount**  
Determine offset then proceed with "Driveway Mount" instructions below.



##### Wall Mount

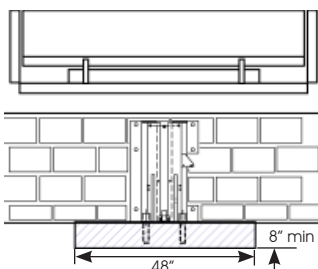
For filler requirements from 1 1/2" to 7 1/2" use cantilever bracket #9414-0052 and anchor cantilever bracket to the dock face or weld to embedded mounting plate (Part #7953-0119)

For filler requirements for 8 3/4" to 13 3/4" use cantilever bracket #9414-0053 and anchor cantilever bracket to the dock face (3/4" Dia. x 5 1/4" min.) (Kit #2103-0004) or weld to embedded mounting plate (Part #9414-0052).



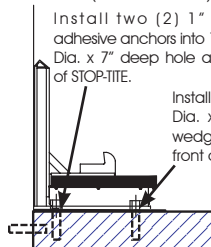
#### Driveway Mount (Recommended when dock face is unsuitable for STOP-TITE Mounting)

Driveway mount requires attachment to a concrete drive greater than 8" thick. For asphalt drive, pour 48" x 48" x 8" (min.) concrete pad and include six (6) 3/4" dowels into foundation wall. Then proceed with adhesive anchors or weld plate embed.



##### Adhesive Anchors Method (Kit #9414-0058)

Install two (2) 1" Dia. adhesive anchors into 1-1/8" Dia. x 7" deep hole at rear of STOP-TITE.



Install two (2) 3/4" Dia. x 5 1/4" min. wedge anchor at front of STOP-TITE.

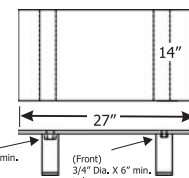
##### Drive Embed Method

###### Weld Method

Properly locate and level the drive embed weld plate (Part #7953-0059) in the drive approach. Observe Cantilever conditions for proper positioning. Weld restraint to embed plate with a continuous 1/4" fillet weld.

###### Bolt on Method

Properly locate and level the drive embed plate (Part #9414-0057) in the drive approach. Observe cantilever conditions for proper positioning. Using the bolts included, bolt the restraint to the embed plate.



Consistent with our policy of continuing product improvement, we reserve the right to change product specifications without notice or obligation.

McGuire • Division of Systems, Inc. • W194 N11481 McCormick Dr. • P.O. Box 309 • Germantown, WI 53022  
Phone: 800.624.8473 • Fax: 262.255.9399 • www.wbmcguire.com

# VEHICLE RESTRAINT