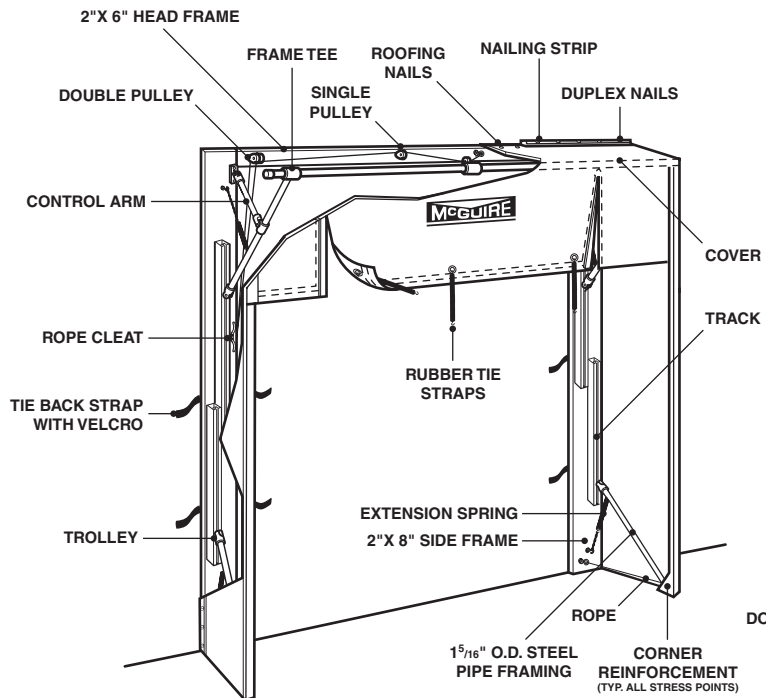
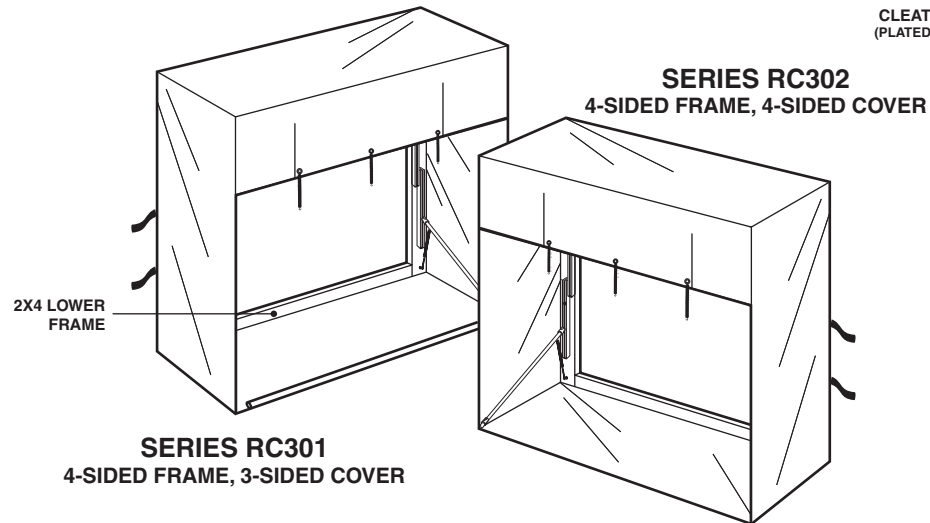
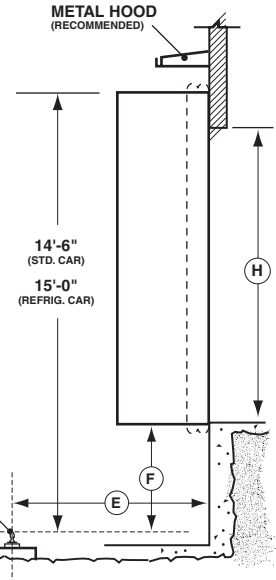
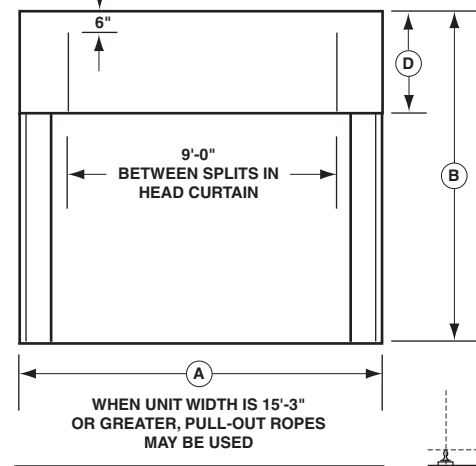
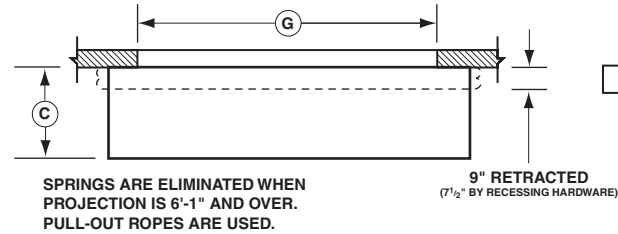
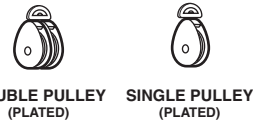


RC300 FLEXIBLE RAIL SHELTER

RC300 RC301 RC302



SERIES RC300
3-SIDED FRAME, 3-SIDED COVER



SERIES RC301 AND RC302: RECOMMENDED BOTTOM TO BE 1'-0" BELOW DOCK LEVEL

GENERAL INFORMATION

— "E" DISTANCE BETWEEN CENTER LINE NEAREST RAIL AND BUILDING FACE

— "F" DOCK HEIGHT FROM TOP OF RAIL

— "G" DOOR WIDTH

— "H" DOOR HEIGHT

— DISTANCE BETWEEN DOORS

— CLEARANCE ABOVE DOOR

PERMANENT RAIL RAMP

CANTILEVER DOCK

— HEIGHT — PROJ.

OUTSIDE SLIDING DOCK DOOR

FABRIC

22 OZ. VINYL ALL COLOR

16 OZ. HYPALON® BLACK

UNIT DATA

— "A" UNIT WIDTH (RECOMMENDED: 6" INCREMENTS) (MUST BE AT LEAST 16" GREATER THAN DOOR OPENING WIDTH)

— "B" UNIT HEIGHT (RECOMMENDED: 6" INCREMENTS) (MUST BE AT LEAST 12" GREATER THAN PROJECTION) (MUST BE AT LEAST 6" GREATER THAN DOOR OPENING - RC300 SERIES)

— "C" UNIT PROJECTION (DETERMINED BY SUBTRACTING 2" FROM DISTANCE BETWEEN CENTER LINE NEAREST RAIL AND BUILDING FACE)

— "D" HEAD CURTAIN LENGTH (RECOMMENDED: 11'-0" FROM TOP OF RAIL TO BOTTOM OF CURTAIN)

OPTIONAL EQUIPMENT

FORMED STEEL FRAMING (MIN. 14 GAUGE)

PAINTED GALVANIZED

RECESSED HARDWARE

PULL ROPE ASSEMBLY - HEAD CURTAIN

COVERED FOAM FACE

NON-ROT WOOD PRESERVATIVE

BLOW OUT BOTTOM (SERIES RC302 ONLY)



205 BROADVIEW STREET • P.O. BOX 151
UPPER SANDUSKY, OH 43351
PHONE 1.800.262.1188
FAX 419.294.4980
WWW.WBMCGUIRE.COM

JOB: _____

LOCATION: _____

CONTRACTOR: _____ ARCHITECT: _____

APPROVED BY SIGNATURE: _____