



- ▶ **Effective & Energy Saving Inflatable Seals Against the Side of Any Rail Car**
- ▶ **Provides Full Unimpeded Access to Rail Car Interior for Loading & Unloading**
- ▶ **Unique Design with Custom Interior Baffles Inside Fabric Bag to Assure Retention of Shape**
- ▶ **Shelter Mounting Frame of Double Kiln Dried Pressure Treated Lumber**
- ▶ **Tension Cords are Strategically Located in the Fabric Bag, Mounted to the Wall to Provide Automatic Lift & Return to Stored Condition**
- ▶ **Available as a 3 or 4 Sided Unit to Fit Individual Rail Siding Requirements**
- ▶ **Air Blower Mounts Easily Above Unit & Comes Equipped with its Own Built-in Hood Assembly**

Specifications

Specifications: Rail dock shelter shall be Series RC _____ as provided by W.B. McGuire™ Company. Each unit shall be designed to accommodate an opening size _____ wide x _____ high; having a _____ dock height above top of rail; _____ distance from dock wall to inside of nearest rail. Unit shall be designed to service rail cars ranging in height from _____ to _____.

RC203 is three sided rail dock shelter and RC204 is four sided rail dock shelter. Each unit shall be constructed having the following minimum dimensions; width of 12'-0"; a height to accommodate rail car height above top of rail (Std. 14'-6" for dry, 15'-0" for refrigerated rail cars); and a projection equal to the distance from dock face to the inside of the nearest (1st) rail minus 24". Model RC204 to be sized to allow 12" of clearance below dock level to accommodate the fourth (or bottom) side.

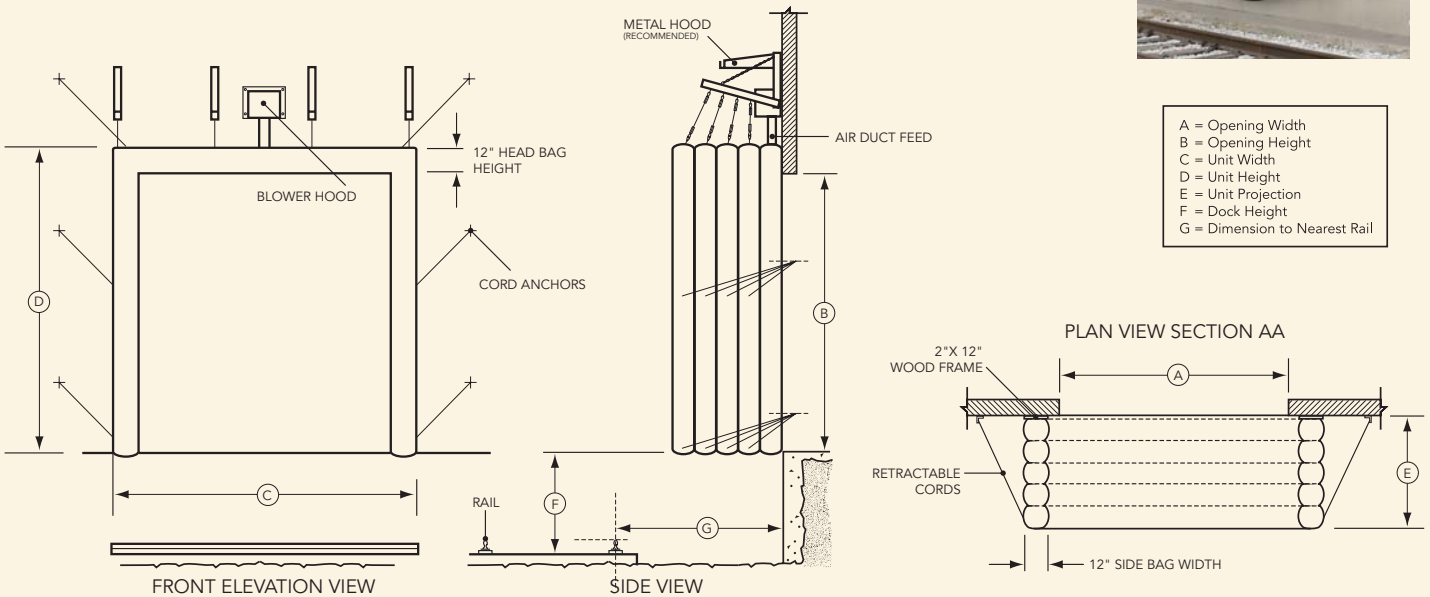
Shelter frame shall consist of (3) or (4) rigid, pressure treated, kiln dried before and after treating, structural wood members. The fabric bag will include interior baffles to assure retention of shape and the bag reinforced rear hems will be attached to the interior and exterior perimeter of the wood framing with galvanized roofing nails.

Blower/Motor and Hood shall be wall mounted a minimum of 16" above the top of the rails, above or to the immediate side of the inflatable unit and a fabric air feed tube shall be incorporated into the bag construction for blower connection. Tension cords shall be provided for attaching to "D" Rings incorporated into the fabric bag at strategic exterior locations, to provide lift and return tension upon deflation. Tension cords shall have their anchor ends attached to provided wall-mounting brackets.

Options

Base Fabric: • Aire Lite – black only

- Options:
- 3 sided unit
 - 4 sided unit
 - 48" standard projection (available up to 84")
 - Metal rain hood



W.B. McGuire™ Company
 205 Broadview Street
 P.O. Box 151
 Upper Sandusky, OH 43351
 Phone 1.800.262.1188
 Fax 419.294.4980
www.wbmcguire.com