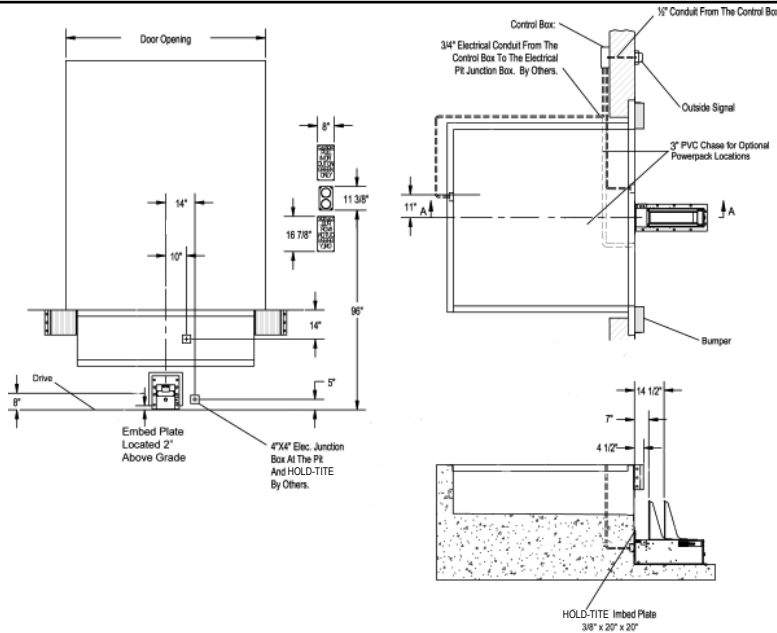


HOLD-TITE SERIES

INSTALLATION OVERVIEW

AUTOMATIC VEHICLE RESTRAINT

HOLD-TITE Overview



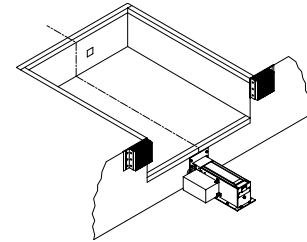
For comprehensive installation instructions of the HOLD-TITE read and understand the Installation and Operation Manual.

Powerpack Location Options

Coordinate powerpack location and hose length for proper placement.

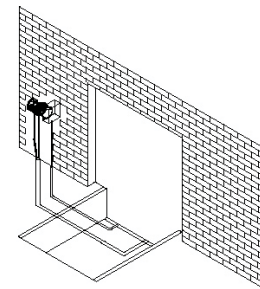
Dock Face (Self Contained)

Appropriate location when the likelihood of flooding, snow removal and damage from trailer/trucks is minimal. Also recommended for use with non-hydraulically powered dock levelers.

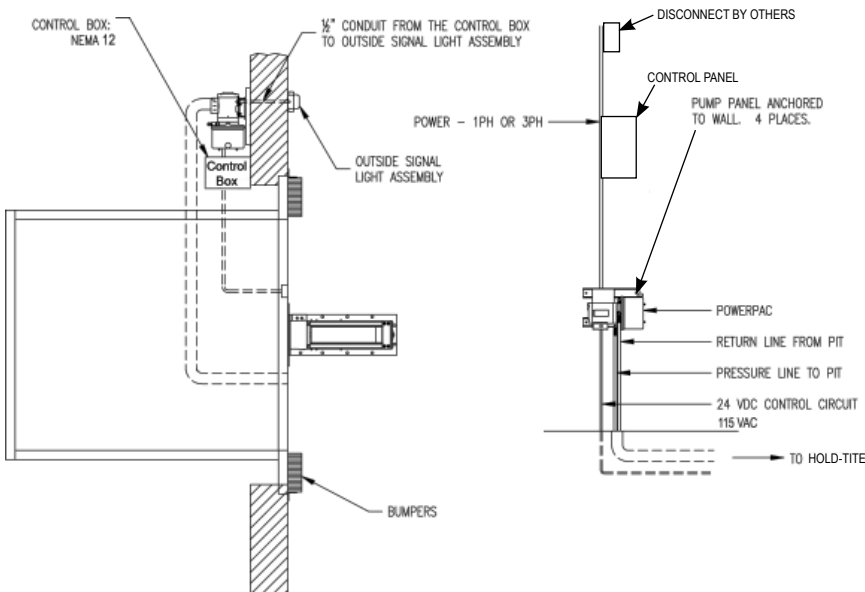


Inside Building (Remote Mount)

Locate powerpack to minimize obstruction potential. Hydraulic and electrical lines from the Powerpack to the restraint are best placed through min. 3" PVC (hydraulic) and 3/4" (electrical) chase during pit construction.



HOLD-TITE Remote Mount Powerpack



HOLD-TITE SERIES

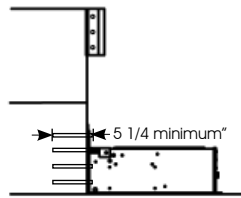
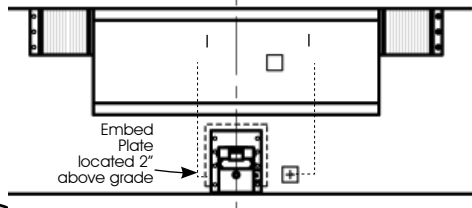
INSTALLATION OVERVIEW

AUTOMATIC VEHICLE RESTRAINT

Concrete Dock Face (Standard Installation)

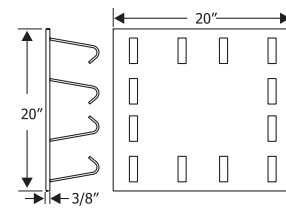
Wedge Anchors Method

Using back plate as a guide, drill eight (8) holes for wedge anchors (3/4" x 5 1/4" min.) (Kit #2103-0004)



Wall Embed Method

Weld three sides of HOLD-TITE back plate to the optional embed mounting plate (Part #7953-0119) with continuous 1/4" fillet weld.



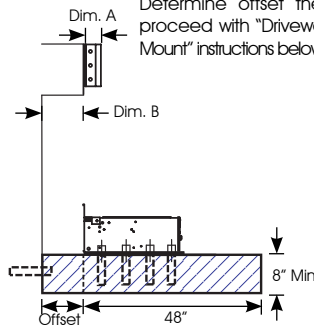
Cantilevered Dock (For bumper projection >4" or cantilevered dock or Edge-of-Dock leveler)

To determine size offset required, take total effective bumper projection (bumper size plus any cantilever) and subtract 4".

Offset Formula			
Dim. A Bumper Projection	Dim. B Cantilever		Offset
4"	+ Dim B	-4"	= Offset
6"	+ Dim B		
10"	+ Dim B		
15"	+ Dim B		

Driveway Mount

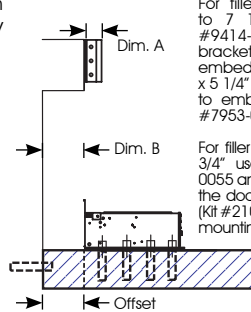
Determine offset then proceed with "Driveway Mount" instructions below.



Wall Mount

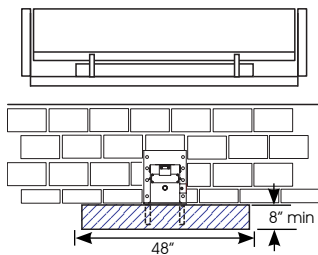
For filler requirements from 1 1/2" to 7 1/2" use cantilever bracket #9414-0054 and anchor cantilever bracket to the dock face or weld to embedded mounting plate (3/4" Dia. x 5 1/4" min.) (Kit #2103-0004) or weld to embedded mounting plate (Part #7953-0119).

For filler requirements for 8 3/4" to 13 3/4" use cantilever bracket #9414-0055 and anchor cantilever bracket to the dock face (3/4" Dia. x 5 1/4" min.) (Kit #2103-0004) or weld to embedded mounting plate (Part #7953-0119).



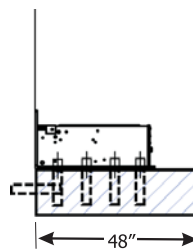
Driveway Mount (Recommended when dock face is unsuitable for HOLD-TITE Mounting)

Driveway mount requires attachment to a concrete drive greater than 8" thick. For asphalt drive, pour 48" x 48" x 8" (min.) concrete pad and include six (6) 3/4" dowels into foundation wall. Then proceed with adhesive anchors or weld plate embed.



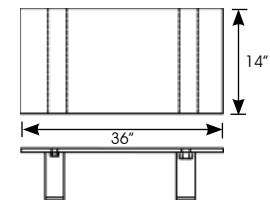
Drive Anchors Method (Kit #2103-0003)

Install six (6) 3/4" Dia. x 5 1/4" min. wedge anchors at the base of the HOLD-TITE.



Drive Embed Method

Weld Method Properly locate and level the drive embed weld plate (Part #7953-0132) in the drive approach. Observe Cantilever conditions for proper positioning. Weld restraint to embed plate with a continuous 1/4" fillet weld.



Consistent with our policy of continuing product improvement, we reserve the right to change product specifications without notice or obligation.

McGuire • Division of Systems, Inc. • W194 N11481 McCormick Dr. • P.O. Box 309 • Germantown, WI 53022
Phone: 800.624.8473 • Fax: 262.255.9399 • www.wbmcguire.com