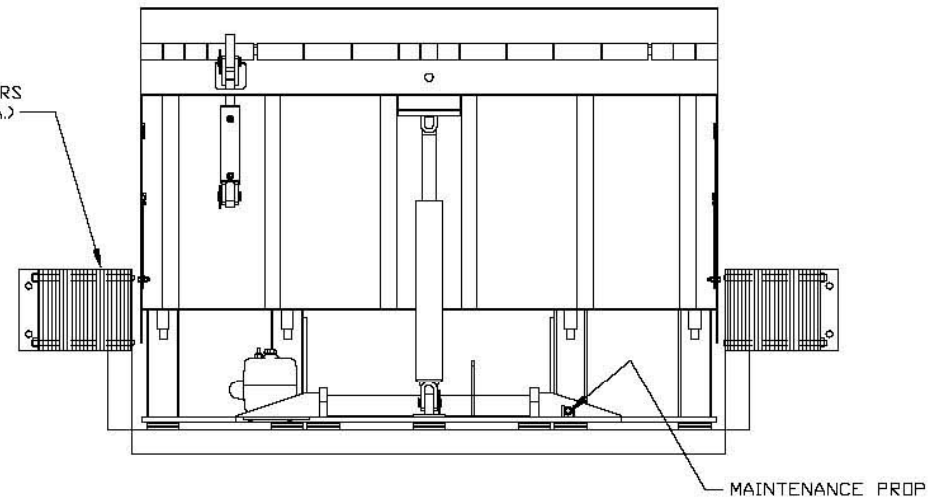
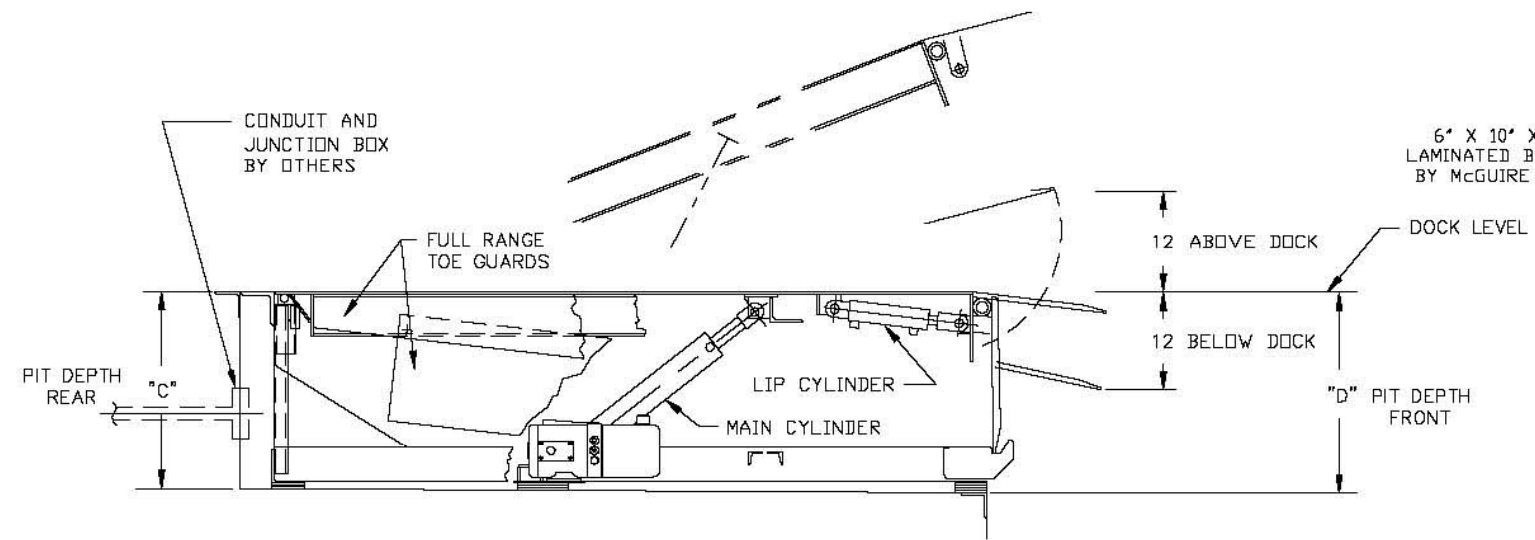


SELECT	MODEL #	NOMINAL SIZE	"A"	"B"	"C"	"D"
<input type="checkbox"/>	H6675	6'X6'	74"	63"	23 1/2'	24"
<input type="checkbox"/>	H6875	6'X8'	74"	87"	23 1/2'	24"
<input type="checkbox"/>	H61075	6'X10'	74"	111"	23 1/2'	24"
<input type="checkbox"/>	H6.5675	6.5'X6'	80"	63"	23 1/2'	24"
<input type="checkbox"/>	H6.5875	6.5'X8'	80"	87"	23 1/2'	24"
<input type="checkbox"/>	H6.51075	6.5'X10'	80"	111"	23 1/2'	24"
<input type="checkbox"/>	H7675	7'X6'	85"	63"	23 1/2'	24"
<input type="checkbox"/>	H7875	7'X8'	85"	87"	23 1/2'	24"
<input type="checkbox"/>	H71075	7'X10'	85"	111"	23 1/2'	24"

- STANDARD 75K "H" SERIES FEATURES**
- NEMA 12 CONTROLS
  - 1 1/4 HP FRAME MOUNTED SINGLE OR 3 PHASE MOTOR
  - FULL RANGE TELESCOPING TOE GUARDS
  - CROSS TRAFFIC SUPPORT
  - INTEGRAL TAMPERPROOF VELOCITY SAFETY STOP
  - LOCKOUT/TAGOUT MAINTENANCE STRUT
  - 18" YIELDABLE LIP
  - 3 WHEEL FORKLIFT PROTECTION
  - STRUCTURAL CHANNEL REAR FRAME SUPPORTS
  - STRUCTURAL I BEAM AND C CHANNEL DECK SUPPORTS
  - GREASE FITTINGS
  - NIGHT LOCK SECURITY
  - CLEAN SWEEP FRAME
  - TWO (2) 6" X 10" X 14" LAMINATED BUMPERS



**OPTIONAL 75K "H" SERIES FEATURES**

- AUTO RETURN TO DOCK
- 20" LIP
- YELLOW & BLACK TOE GUARD SAFETY TAPE
- RUBBER WEATHER SEALS (SIDES ONLY REQUIRED)
- BRUSH WEATHER SEALS (SIDES ONLY REQUIRED)
- QUICK CYCLE LIP EXTEND BUTTON
- MUSHROOM STYLE EMERGENCY STOP BUTTON
- CLEAN PIT (FRAME REMOVED)
- OPTIONAL BUMPERS PLEASE SPECIFY
- BL-2 BARRIER LIP
- NON METALLIC NEMA 4 CONTROL BOX (NON INTERLOCK)
- MISC

**AVAILABLE VOLTAGES (SELECT ONE)**

- 110/115/120/1/60
- 208/220/230/3/60
- 208/220/230/1/60
- 440/460/480/3/60

Customer:		Certified For Construction:	
Job:		By:	
Location:		Date:	
Number of Units:		Company:	
Model:		City & State:	
Size:			
Represented By:		Voltage:	
Sales Rep:		Drawing #:	

<small>TELEPHONE UNLESS OTHERWISE SPECIFIED          DECIMAL DIMENSIONS FRACTIONAL DIMENSIONS - L/64          X OF JOG 1/8 DIA HOLE DIMENSION - 1/8 DIA          DIA - 1/8 DIA ANGULAR DIMENSION - 1 DEG.</small>		DRAWN <b>TSB</b> DATE 9/11/08 SCALE NTS CHECKED TSB	<b>McGUIRE</b> W.B.McGUIRE Co., Inc.	McGUIRE AUTODOCK 75K (CIR) H SERIES HYDRAULIC LEVELER GENERAL ARRANGEMENT DRAWING NO. PART NO. H75	REV
---	--	--	---	---	-----